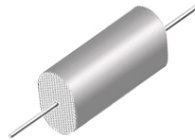
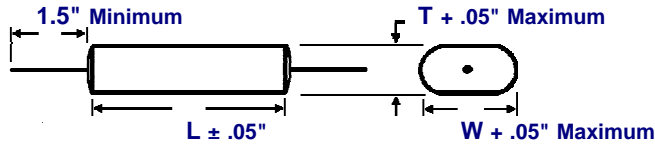


SUPERMETALLIZED POLYPROPYLENE WRAP AND FILL, OVAL AXIAL LEAD CAPACITORS



VW2
SUPERMETALLIZED POLYPROPYLENE
WRAP & FILL, OVAL
MINIATURE SERIES

DIMENSIONS See tables for specific T, W, L values.



WIRE SIZE (Length 1.5" Minimum) Tin plated solid copper leads.

BODY LENGTH (L)	WIRE SIZE	
	AWG No.	Diameter
≤ 0.98"	22	0.025"
> 0.98" ≤ 1.45"	20	0.032"
> 1.45"	18	0.040"

V SERIES SUPERMETALLIZED POLYPROPYLENE CAPACITORS FOR SWITCHING POWER SUPPLIES

LOW ESR • HIGH CURRENT • HIGH FREQUENCY

CONSTRUCTION:

Low loss SuperMetallized Polypropylene dielectric; extended foil, with high current end terminations. Type **VW** Series are encased in a skin tight flame retardant* plastic wrap with epoxy end fill. *UL 510 Specification.

CAPACITANCE:

Measured at +25°C @ 1000Hz. MIL STD 202 Method 305

EQUIVALENT SERIES RESISTANCE:

Maximum ESR in milliohms @ 100KHz and +25°C.

RMS CURRENT:

Maximum RMS current in amps @ +25°C.

PEAK CURRENT:

Maximum Peak current in amps @ +25°C.

DV/DT:

Maximum allowed change in volts per microsecond.

OPERATING TEMPERATURE:

-55°C to +105°C without derating

SELECTION AND ORDERING TABLE

400VDC								
MFD RATING	T + .05"	W + .05"	L ± .05"	ESR MAX	RMS AMPS	PEAK AMPS	DV/DT MAX	PART NUMBER
.10	.17	.25	.67	85	1	70	700	VW2G104K
.15	.22	.31	.67	54	1.5	105	700	VW2G154K
.22	.28	.37	.67	42	2	154	700	VW2G224K
.33	.35	.44	.67	27	3	231	700	VW2G334K
.47	.23	.48	1.17	21	4	138	294	VW2G474K
.68	.25	.54	1.17	13	6	200	294	VW2G684K
1.0	.34	.60	1.17	11	9	294	294	VW2G105K
1.2	.37	.63	1.17	10	9	353	294	VW2G125K
1.5	.43	.70	1.17	9	10	441	294	VW2G155K
2.0	.49	.79	1.17	8	11	588	294	VW2G205K
2.2	.51	.84	1.17	8	11	647	294	VW2G225K
3.0	.62	.90	1.17	7	15	882	294	VW2G305K
3.3	.64	.94	1.17	7	15	970	294	VW2G335K
4.0	.78	.99	1.17	7	16	1176	294	VW2G405K
4.7	.59	.89	1.68	7	17	874	186	VW2G475K
5.0	.62	.91	1.68	7	17	930	186	VW2G505K
6.0	.70	.99	1.68	7	17	1116	186	VW2G605K
6.8	.62	.91	2.17	7	17	925	136	VW2G685K
8.0	.74	.98	2.17	6	18	1088	136	VW2G805K
10.0	.83	1.09	2.17	6	19	1360	136	VW2G106K
15.0	1.07	1.31	2.17	6	20	2040	136	VW2G156K
20.0	1.24	1.48	2.17	6	20	2720	136	VW2G206K
30.0	1.53	1.77	2.17	6	20	4080	136	VW2G306K
40.0	1.78	1.99	2.17	6	20	5440	136	VW2G406K

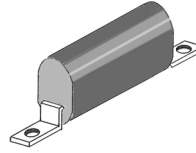
SELECTION AND ORDERING TABLES Select voltage rating, capacitance and tolerance, read Part Number to the right.

600VDC								
MFD RATING	T + .05"	W + .05"	L ± .05"	ESR MAX	RMS AMPS	PEAK AMPS	DV/DT MAX	PART NUMBER
.10	.28	.37	.78	75	1	93	936	VW2J104K
.15	.35	.44	.78	40	1.5	140	936	VW2J154K
.22	.44	.53	.78	25	2	206	936	VW2J224K
.33	.55	.64	.78	20	3	309	936	VW2J334K
.47	.41	.70	1.17	13	4	240	511	VW2J474K
.68	.50	.80	1.17	10	6	347	511	VW2J684K
1.0	.62	.92	1.17	8	9	511	511	VW2J105K
1.2	.69	.98	1.17	7	10	613	511	VW2J125K
1.5	.68	.98	1.45	7	11	477	318	VW2J155K
2.0	.82	1.07	1.45	6	12	636	318	VW2J205K
2.2	.59	.89	2.17	10	13	508	231	VW2J225K
3.0	.76	1.02	2.17	10	14	693	231	VW2J305K
3.3	.78	1.10	2.17	10	15	762	231	VW2J335K
4.0	.91	1.18	2.17	9	16	924	231	VW2J405K
4.7	.94	1.28	2.17	9	16	1085	231	VW2J475K
5.0	.99	1.31	2.17	9	16	1155	231	VW2J505K
6.0	1.14	1.39	2.17	9	16	1386	231	VW2J605K
6.8	1.19	1.51	2.17	9	17	1571	231	VW2J685K
8.0	1.24	1.68	2.17	8	18	1848	231	VW2J805K
10.0	1.41	1.83	2.17	7	19	2310	231	VW2J106K

1000VDC								
MFD RATING	T + .05"	W + .05"	L ± .05"	ESR MAX	RMS AMPS	PEAK AMPS	DV/DT MAX	PART NUMBER
.10	.48	.57	.78	85	1	149	1493	VW2M104K
.15	.61	.69	.78	54	2	224	1493	VW2M154K
.22	.53	.62	1.17	42	2	180	818	VW2M224K
.33	.66	.75	1.17	27	3	270	818	VW2M334K
.47	.80	.89	1.17	21	4	384	818	VW2M474K
.68	.76	1.00	1.45	13	6	427	628	VW2M684K
1.0	.96	1.20	1.45	11	9	628	628	VW2M105K
1.2	1.06	1.31	1.45	10	9	754	628	VW2M125K
1.5	.89	1.13	2.17	9	10	555	370	VW2M155K
2.0	1.04	1.29	2.17	8	11	740	370	VW2M205K
2.2	1.11	1.35	2.17	8	11	814	370	VW2M225K
3.0	1.30	1.54	2.17	7	15	1110	370	VW2M305K
3.3	1.36	1.60	2.17	7	15	1221	370	VW2M335K
4.0	1.51	1.75	2.17	7	16	1480	370	VW2M405K
4.7	1.64	1.88	2.17	7	16	1739	370	VW2M475K
5.0	1.69	1.93	2.17	7	16	1850	370	VW2M505K
6.0	1.64	1.88	2.67	7	17	1746	291	VW2M605K
6.8	1.75	1.99	2.67	7	17	1978	291	VW2M685K
8.0	1.90	2.14	2.67	6	18	2328	291	VW2M805K
10.0	2.13	2.37	2.67	6	19	2910	291	VW2M106K

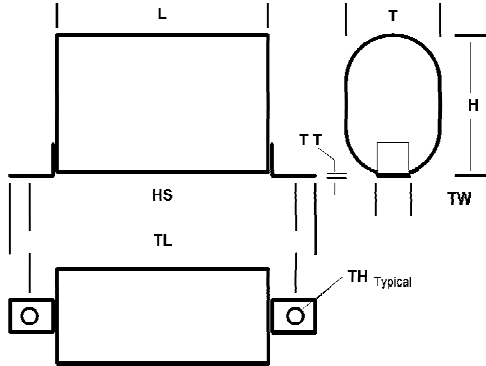
Note: Replace the last digit **K** with the desired tolerance code from the tolerance table. For an in-between value use the next larger value's dimensions. Custom sizes are readily available. All dimensions are in inches. All +.05" dimension tolerances are Maximum.

SUPERMETALLIZED POLYPROPYLENE WRAP AND FILL, OVAL SURFACE MOUNT TAB CAPACITORS



VWT2
SUPERMETALLIZED POLYPROPYLENE
WRAP & FILL, OVAL
MINIATURE SERIES

DIMENSIONS See tables for specific T, H, L, HS, TL, TW, TT, TH, values.



TAB MOUNTING DIMENSIONS					
L CAPACITOR BODY LENGTH	HS HOLE SPACING ± .02"	TL TOTAL LENGTH ± .05"	TW TAB WIDTH ± .05"	TT TAB THICKNESS ± .005"	TH TAB HOLE ± .010"
.88	1.48	1.88	.32	.028	.168
1.25	1.85	2.25	.32	.028	.168
1.50	2.10	2.50	.32	.028	.168
1.75	2.35	2.75	.32	.028	.168
2.25	2.85	3.25	.32	.028	.168
2.75	3.35	3.75	.32	.028	.168

V SERIES SUPERMETALLIZED POLYPROPYLENE CAPACITORS FOR SWITCHING POWER SUPPLIES LOW ESR • HIGH CURRENT • HIGH FREQUENCY

CONSTRUCTION:

Low loss SuperMetallized Polypropylene dielectric; extended foil, with high current end terminations. Type VW Series are encased in a skin tight flame retardant* plastic wrap with epoxy end fill.
*UL 510 Specification.

CAPACITANCE:

Measured at +25°C @ 1000Hz. MIL STD 202 Method 305

EQUIVALENT SERIES RESISTANCE:

Maximum ESR in milliohms @ 100KHz and +25°C.

RMS CURRENT:

Maximum RMS current in amps @ +25°C.

PEAK CURRENT:

Maximum Peak current in amps @ +25°C.

DV/DT:

Maximum allowed change in volts per microsecond.

OPERATING TEMPERATURE:

-55°C to +105°C without derating

SELECTION AND ORDERING TABLE

400VDC								
MFD RATING	T + .05"	H + .05"	L ± .05"	ESR MAX	RMS AMPS	PEAK AMPS	DV/DT MAX	PART NUMBER
1.5	.43	.70	1.25	9	10	441	294	VWT2G155K
2.0	.49	.79	1.25	8	11	588	294	VWT2G205K
2.2	.51	.84	1.25	8	11	647	294	VWT2G225K
3.0	.62	.90	1.25	7	15	882	294	VWT2G305K
3.3	.64	.94	1.25	7	15	970	294	VWT2G335K
4.0	.78	.99	1.25	7	16	1176	294	VWT2G405K
4.7	.59	.89	1.75	7	17	874	186	VWT2G475K
5.0	.62	.91	1.75	7	17	930	186	VWT2G505K
6.0	.70	.99	1.75	7	17	1116	186	VWT2G605K
6.8	.62	.91	2.25	7	17	925	136	VWT2G685K
8.0	.74	.98	2.25	6	18	1088	136	VWT2G805K
10.0	.83	1.09	2.25	6	19	1360	136	VWT2G106K
15.0	1.07	1.31	2.25	6	20	2040	136	VWT2G156K
20.0	1.24	1.48	2.25	6	20	2720	136	VWT2G206K
30.0	1.53	1.77	2.25	6	20	4080	136	VWT2G306K
40.0	1.78	1.99	2.25	6	20	5440	136	VWT2G406K

SELECTION AND ORDERING TABLES Select voltage rating, capacitance and tolerance, read Part Number to the right.

600VDC								
MFD RATING	T + .05"	H + .05"	L ± .05"	ESR MAX	RMS AMPS	PEAK AMPS	DV/DT MAX	PART NUMBER
.22	.44	.53	.88	25	2	206	936	VWT2J224K
.33	.55	.64	.88	20	3	309	936	VWT2J334K
.47	.41	.70	1.25	13	4	240	511	VWT2J474K
.68	.50	.80	1.25	10	6	347	511	VWT2J684K
1.0	.62	.92	1.25	8	9	511	511	VWT2J105K
1.2	.69	.98	1.25	7	10	613	511	VWT2J125K
1.5	.68	.98	1.50	7	11	477	318	VWT2J155K
2.0	.82	1.07	1.50	6	12	636	318	VWT2J205K
2.2	.59	.89	2.25	10	13	508	231	VWT2J225K
3.0	.76	1.02	2.25	10	14	693	231	VWT2J305K
3.3	.78	1.10	2.25	10	15	762	231	VWT2J335K
4.0	.91	1.18	2.25	9	16	924	231	VWT2J405K
4.7	.94	1.28	2.25	9	16	1085	231	VWT2J475K
5.0	.99	1.31	2.25	9	16	1155	231	VWT2J505K
6.0	1.14	1.39	2.25	9	16	1386	231	VWT2J605K
6.8	1.19	1.51	2.25	9	17	1571	231	VWT2J685K
8.0	1.24	1.68	2.25	8	18	1848	231	VWT2J805K
10.0	1.41	1.83	2.25	7	19	2310	231	VWT2J106K

1000VDC								
MFD RATING	T + .05"	H + .05"	L ± .05"	ESR MAX	RMS AMPS	PEAK AMPS	DV/DT MAX	PART NUMBER
.10	.48	.57	.88	85	1	149	1493	VWT2M104K
.15	.61	.69	.88	54	2	224	1493	VWT2M154K
.22	.53	.62	1.25	42	2	180	818	VWT2M224K
.33	.66	.75	1.25	27	3	270	818	VWT2M334K
.47	.80	.89	1.25	21	4	384	818	VWT2M474K
.68	.76	1.00	1.50	13	6	427	628	VWT2M684K
1.0	.96	1.20	1.50	11	9	628	628	VWT2M105K
1.2	1.06	1.31	1.50	10	9	754	628	VWT2M125K
1.5	.89	1.13	2.25	9	10	555	370	VWT2M155K
2.0	1.04	1.29	2.25	8	11	740	370	VWT2M205K
2.2	1.11	1.35	2.25	8	11	814	370	VWT2M225K
3.0	1.30	1.54	2.25	7	15	1110	370	VWT2M305K
3.3	1.36	1.60	2.25	7	15	1221	370	VWT2M335K
4.0	1.51	1.75	2.25	7	16	1480	370	VWT2M405K
4.7	1.64	1.88	2.25	7	16	1739	370	VWT2M475K
5.0	1.69	1.93	2.25	7	16	1850	370	VWT2M505K
6.0	1.64	1.88	2.75	7	17	1746	291	VWT2M605K
6.8	1.75	1.99	2.75	7	17	1978	291	VWT2M685K
8.0	1.90	2.14	2.75	6	18	2328	291	VWT2M805K
10.0	2.13	2.37	2.75	6	19	2910	291	VWT2M106K

Note: Replace the last digit **K** with the desired tolerance code from the tolerance table. For an in-between value use the next larger value's dimensions. Custom sizes are readily available. All dimensions are in inches. All +.05" dimension tolerances are Maximum.