

AMERICAN CAPACITOR CORPORATION

METALLIZED MYLAR CAPACITORS

ENGINEERING DATA SHEET

SERIES **D**

New Flame Retardant Styles Available

ENVIRONMENTAL DATA

APPLICATIONS

Series D Metallized Mylar capacitors are superior general purpose capacitors for both AC and DC applications. They are dry-section, non-polar, non-inductive wound capacitors with high volumetric efficiency and a low cost.

Series D Capacitors come in several styles: Oval Wrap & Fill (DW Style); Round Wrap & Fill (DR Style); Axial Epoxy Case (DE Style); Radial Epoxy Case (DF Style); Rectangular Hermetically Sealed (DG Style); Round Hermetically Sealed (DL Style); Round Wrapped Feed-Through (DQ Style). They are available in several sizes including Regular (3 Size code) and Miniature (2 Size code) as well as custom sizes to meet specific customer requirements.

Contact our Engineering Department for special sizes, configurations, capacitance values and AC applications with Anti-Corona construction at all frequencies. Custom metal enclosures are available. Custom designed Feed Through capacitors (DQ Style) are also available for filter applications to specific requirements.

OPERATING TEMPERATURE RANGE

Range: -55°C to $+125^{\circ}\text{C}$, with voltage derating.

LIFE TEST

Series D capacitors shall be capable of withstanding a test of 1000 hours at $+125^{\circ}\text{C}$ and 100% of the derated DC voltage or a test of 250 hours at $+125^{\circ}\text{C}$ and 140% of the derated DC voltage. The voltage shall be applied to each capacitor through its individual current-limiting resistor as determined from the formula $R = 0.025/C$, where C is the nominal capacitance in farads and R is in ohms.

The test procedures shall be in accordance with MIL-C-18312, except as noted herein. Not more than one failure in twelve shall be permitted. Any one of the following shall be considered a failure.

- A change in capacitance of more than 10% from it's initial value.
- An increase in Dissipation Factor to a value greater than 125% of the acceptance limit.
- A decrease in Insulation Resistance to a value less than 30% of the acceptance limit for $+25^{\circ}\text{C}$.
- A permanent short or open.

VIBRATION

Series D capacitors shall be capable of withstanding a vibration test in accordance with MIL-STD-202, Method 201. The following details and exceptions shall apply:

a. **Mounting.** The capacitor body shall be rigidly mounted by the entire body length to the vibration test fixture. The leads shall be soldered to rigidly supported terminals and so spaced that the length of each lead from the capacitor is $1/2 \pm 1/8$ inch from the edge of the supporting terminal.

b. **Measurement during Vibration.** During the last cycle in each direction, an electrical measurement shall be made to detect intermittent contacts (not to be confused with "self healing" clearings) or open or short circuiting.

c. **Examination After Vibration.** Capacitors shall be visibly examined for evidence of mechanical damage.

MOISTURE RESISTANCE

Series D capacitor Styles DG and DL (Hermetically Sealed in metal containers) as well as Metal Can Styles DB and DC shall be capable of withstanding the moisture resistance, humidity, and temperature and immersion cycling or MIL-C-18312. Styles DE and DF (Epoxy Case), Styles DW and DR (Wrap & Fill) and DQ (Feed-Through) capacitors are not intended for exposure to high humidity conditions over extended periods of time.

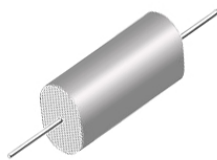
TERMINAL STRENGTH

Series D capacitors utilize tin-plated, copper-clad steel wire terminals which shall be capable of withstanding the following test without mechanical damage to the capacitor or terminals:

a. **Pull Test.** The capacitor shall withstand a steady pull of 5 pounds axially to the leads for 1 minute.

b. **Bend Test.** The wire lead terminals shall be bent at a point of 1/4 inch from the body of the capacitor, first 90 degrees in one direction, then back to the original position, and then 90 degrees in the opposite direction.

METALLIZED MYLAR WRAP AND FILL, OVAL AXIAL LEAD CAPACITORS



DW3

METALLIZED MYLAR
WRAP & FILL, OVAL
REGULAR SERIES

ORDERING DESCRIPTION

Capacitor, fixed: Metallized Mylar dielectric; extended foil construction; tin-plated copper-clad steel wire axial leads; encased in skin-tight plastic wrap with epoxy end fill. In addition to the standard Tape, New Flame Retardant Tape is available meeting UL 510 Flame Retardant Specifications.

APPLICATION NOTES

Wrap & Fill capacitors are not intended for exposure to high humidity conditions over extended periods of time. For stringent environmental conditions, Wrap & Fill capacitors should be used in encapsulated or hermetically sealed circuitry. For UL 510 Flame Retardant Tape add -R to the end of the Part Number.

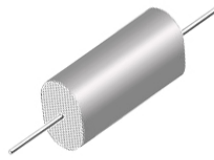
SELECTION AND ORDERING TABLES

Select voltage rating, capacitance and tolerance, read Part Number to the right.

MFD	35VDC 20VAC				50VDC 40VAC				100VDC 70VAC				200VDC 120VAC			
	T		W		L		PART #		T		W		L		PART #	
	+ .05"	+ .05"	± .05"		+ .05"	+ .05"	± .05"		+ .05"	+ .05"	± .05"		+ .05"	+ .05"	± .05"	
.001	.09	.18	.40	DW3S102K	.09	.18	.40	DW3C102K	.09	.18	.40	DW3D102K	.09	.18	.40	DW3E102K
.0027	.09	.18	.40	DW3S272K	.09	.18	.40	DW3C272K	.09	.18	.40	DW3D272K	.09	.18	.40	DW3E272K
.0033	.09	.18	.40	DW3S332K	.09	.18	.40	DW3C332K	.09	.18	.40	DW3D332K	.09	.18	.40	DW3E332K
.0056	.09	.18	.40	DW3S562K	.09	.18	.40	DW3C562K	.09	.18	.40	DW3D562K	.09	.18	.40	DW3E562K
.0068	.09	.18	.40	DW3S682K	.09	.18	.40	DW3C682K	.09	.18	.40	DW3D682K	.09	.18	.40	DW3E682K
.0082	.09	.18	.40	DW3S822K	.09	.18	.40	DW3C822K	.09	.18	.40	DW3D822K	.09	.18	.40	DW3E822K
.01	.09	.18	.40	DW3S103K	.09	.18	.40	DW3C103K	.09	.18	.40	DW3D103K	.15	.26	.40	DW3E103K
.012	.09	.18	.40	DW3S123K	.09	.18	.40	DW3C123K	.09	.18	.40	DW3D123K	.15	.26	.40	DW3E123K
.015	.09	.18	.40	DW3S153K	.09	.18	.40	DW3C153K	.09	.18	.40	DW3D153K	.15	.26	.40	DW3E153K
.018	.09	.18	.40	DW3S183K	.09	.18	.40	DW3C183K	.09	.18	.40	DW3D183K	.15	.26	.40	DW3E183K
.022	.09	.18	.40	DW3S223K	.09	.18	.40	DW3C223K	.09	.18	.40	DW3D223K	.15	.26	.40	DW3E223K
.027	.09	.18	.40	DW3S273K	.09	.18	.40	DW3C273K	.09	.18	.40	DW3D273K	.15	.28	.40	DW3E273K
.033	.09	.18	.40	DW3S333K	.09	.18	.40	DW3C333K	.10	.21	.40	DW3D333K	.15	.28	.40	DW3E333K
.039	.09	.18	.40	DW3S393K	.09	.18	.40	DW3C393K	.10	.23	.40	DW3D393K	.15	.28	.40	DW3E393K
.047	.09	.18	.40	DW3S473K	.09	.18	.40	DW3C473K	.11	.24	.40	DW3D473K	.15	.28	.40	DW3E473K
.056	.09	.18	.40	DW3S563K	.09	.19	.40	DW3C563K	.13	.25	.40	DW3D563K	.16	.29	.53	DW3E563K
.068	.09	.18	.40	DW3S683K	.10	.20	.40	DW3C683K	.14	.27	.40	DW3D683K	.17	.30	.53	DW3E683K
.082	.09	.18	.40	DW3S823K	.11	.21	.40	DW3C823K	.09	.22	.53	DW3D823K	.18	.31	.53	DW3E823K
.10	.09	.18	.40	DW3S104K	.13	.22	.40	DW3C104K	.11	.24	.53	DW3D104K	.22	.35	.53	DW3E104K
.12	.09	.18	.40	DW3S124K	.14	.24	.40	DW3C124K	.13	.26	.53	DW3D124K	.23	.35	.53	DW3E124K
.15	.09	.18	.40	DW3S154K	.11	.21	.53	DW3C154K	.15	.28	.53	DW3D154K	.21	.34	.65	DW3E154K
.18	.10	.20	.40	DW3S184K	.12	.22	.53	DW3C184K	.17	.30	.53	DW3D184K	.24	.35	.65	DW3E184K
.22	.11	.22	.40	DW3S224K	.13	.23	.53	DW3C224K	.19	.32	.53	DW3D224K	.25	.35	.65	DW3E224K
.25	.12	.22	.40	DW3S254K	.14	.24	.53	DW3C254K	.16	.29	.65	DW3D254K	.24	.37	.78	DW3E254K
.27	.13	.22	.40	DW3S274K	.15	.25	.53	DW3C274K	.17	.30	.65	DW3D274K	.25	.38	.78	DW3E274K
.33	.15	.24	.40	DW3S334K	.17	.26	.53	DW3C334K	.19	.32	.65	DW3D334K	.28	.41	.78	DW3E334K
.39	.16	.25	.40	DW3S394K	.18	.28	.53	DW3C394K	.17	.30	.78	DW3D394K	.30	.43	.78	DW3E394K
.47	.18	.28	.40	DW3S474K	.20	.30	.53	DW3C474K	.19	.32	.78	DW3D474K	.32	.45	.78	DW3E474K
.50	.11	.21	.53	DW3S504K	.21	.31	.53	DW3C504K	.20	.33	.78	DW3D504K	.33	.46	.78	DW3E504K
.56	.12	.22	.53	DW3S564K	.22	.32	.53	DW3C564K	.21	.34	.78	DW3D564K	.31	.44	.97	DW3E564K
.68	.13	.23	.53	DW3S684K	.25	.35	.53	DW3C684K	.23	.36	.78	DW3D684K	.33	.46	.97	DW3E684K
.75	.14	.24	.53	DW3S754K	.26	.36	.53	DW3C754K	.26	.36	.78	DW3D754K	.35	.48	.97	DW3E754K
.82	.15	.24	.53	DW3S824K	.22	.31	.65	DW3C824K	.27	.38	.78	DW3D824K	.33	.46	1.17	DW3E824K
1.0	.17	.26	.53	DW3S105K	.24	.34	.65	DW3C105K	.25	.36	.97	DW3D105K	.36	.49	1.17	DW3E105K
1.2	.19	.28	.53	DW3S125K	.21	.33	.78	DW3C125K	.27	.39	.97	DW3D125K	.26	.46	1.68	DW3E125K
1.5	.22	.31	.53	DW3S155K	.24	.36	.78	DW3C155K	.31	.42	.97	DW3D155K	.31	.53	1.68	DW3E155K
1.8	.25	.34	.53	DW3S185K	.30	.36	.78	DW3C185K	.33	.49	.97	DW3D185K	.35	.57	1.68	DW3E185K
2.0	.26	.35	.53	DW3S205K	.31	.39	.78	DW3C205K	.34	.50	.97	DW3D205K	.37	.59	1.68	DW3E205K
3.0	.25	.35	.65	DW3S305K	.31	.43	.97	DW3C305K	.37	.53	1.17	DW3D305K	.47	.69	1.68	DW3E305K
4.0	.25	.35	.78	DW3S405K	.31	.43	1.17	DW3C405K	.35	.51	1.68	DW3D405K	.58	.79	1.68	DW3E405K
5.0	.28	.38	.78	DW3S505K	.34	.46	1.17	DW3C505K	.38	.54	1.68	DW3D505K	.64	.85	1.68	DW3E505K
6.0	.31	.42	.78	DW3S605K	.37	.52	1.17	DW3C605K	.40	.56	2.00	DW3D605K	.70	.91	1.68	DW3E605K
8.0	.32	.42	.97	DW3S805K	.44	.56	1.17	DW3C805K	.45	.61	2.00	DW3D805K	.79	1.03	1.68	DW3E805K
10.0	.37	.46	.97	DW3S106K	.50	.62	1.17	DW3C106K	.51	.67	2.00	DW3D106K	.85	1.18	1.68	DW3E106K
12.0	.30	.48	1.17	DW3S126K	.55	.69	1.17	DW3C126K	.56	.72	2.00	DW3D126K	.82	1.06	2.25	DW3E126K
15.0	.35	.51	1.17	DW3S156K	.48	.60	1.68	DW3C156K	.60	.82	2.00	DW3D156K	.91	1.15	2.25	DW3E156K
20.0	.41	.57	1.17	DW3S206K	.52	.76	1.68	DW3C206K	.67	.91	2.00	DW3D206K	1.07	1.30	2.25	DW3E206K
30.0	.52	.69	1.17	DW3S306K	.64	.88	1.68	DW3C306K	.82	1.06	2.00	DW3D306K	1.31	1.55	2.25	DW3E306K
40.0	.61	.78	1.17	DW3S406K	.73	.97	1.68	DW3C406K	.95	1.19	2.00	DW3D406K	1.27	1.51	3.25	DW3E406K
50.0	.60	.77	1.45	DW3S506K	.82	1.06	1.68	DW3C506K	1.06	1.30	2.00	DW3D506K	1.41	1.65	3.25	DW3E506K
75.0	.67	.84	1.68	DW3S756K	1.01	1.25	1.68	DW3C756K	1.31	1.55	2.00	DW3D756K	1.73	1.97	3.25	DW3E756K
100.0	.65	.83	2.25	DW3S107K	1.17	1.41	1.68	DW3C107K	1.52	1.76	2.00	DW3D107K	1.99	2.23	3.25	DW3E107K

Note: Replace the last digit **K** with the desired tolerance code from the tolerance table. For an in-between value use the next larger value's dimensions. Custom sizes are readily available. All dimensions are in inches. All +.05" dimension tolerances are Maximum.

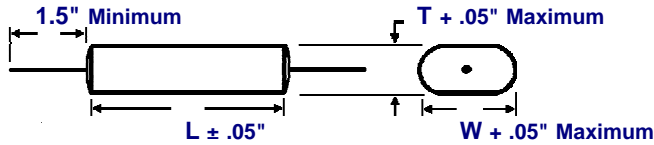
METALLIZED MYLAR WRAP AND FILL, OVAL AXIAL LEAD CAPACITORS



DW3
METALLIZED MYLAR
WRAP & FILL, OVAL
REGULAR SERIES

DIMENSIONS See tables for specific T, W, L values.

WIRE SIZE (Length 1.5" Minimum)



BODY LENGTH (L)	WIRE SIZE	
	AWG No.	Diameter
≤ 0.65"	24	0.020"
> 0.65" ≤ 1.00"	22	0.025"
> 1.00"	20	0.032"

SELECTION AND ORDERING TABLES Select voltage rating, capacitance and tolerance, read Part Number to the right.

For UL 510 Flame Retardant Tape add -R to the end of Part Number.

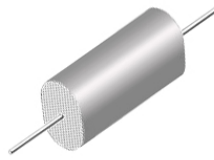
MFD	400VDC 160VAC				600VDC 230VAC				1000VDC 360VAC				2000VDC 700VAC					
	RATING		T	W	L	PART #	T	W	L	PART #	T	W	L	PART #	T	W	L	PART #
	+ .05"	+ .05"	± .05"				+ .05"	+ .05"	± .05"						+ .05"	+ .05"	± .05"	
.001	.09	.18	.40	DW3G102K	.09	.18	.40	DW3J102K	.14	.23	.97	DW3M102K	.14	.23	.97	DW3R102K		
.0012	.09	.18	.40	DW3G122K	.09	.18	.40	DW3J122K	.14	.23	.97	DW3M122K	.14	.23	.97	DW3R122K		
.0015	.09	.18	.40	DW3G152K	.09	.18	.40	DW3J152K	.14	.23	.97	DW3M152K	.14	.23	.97	DW3R152K		
.0018	.09	.18	.40	DW3G182K	.09	.18	.40	DW3J182K	.14	.23	.97	DW3M182K	.14	.23	.97	DW3R182K		
.0022	.09	.18	.40	DW3G222K	.09	.18	.40	DW3J222K	.15	.24	.97	DW3M222K	.16	.25	.97	DW3R222K		
.0027	.09	.18	.40	DW3G272K	.09	.18	.40	DW3J272K	.15	.24	.97	DW3M272K	.17	.26	.97	DW3R272K		
.0033	.09	.18	.40	DW3G332K	.09	.18	.40	DW3J332K	.15	.24	.97	DW3M332K	.19	.28	.97	DW3R332K		
.0039	.09	.18	.40	DW3G392K	.09	.18	.40	DW3J392K	.15	.24	.97	DW3M392K	.21	.30	.97	DW3R392K		
.0047	.09	.18	.40	DW3G472K	.09	.18	.40	DW3J472K	.16	.25	.97	DW3M472K	.23	.32	.97	DW3R472K		
.0056	.09	.18	.40	DW3G562K	.10	.19	.40	DW3J562K	.16	.25	.97	DW3M562K	.25	.34	.97	DW3R562K		
.0068	.09	.18	.40	DW3G682K	.11	.20	.40	DW3J682K	.16	.25	.97	DW3M682K	.28	.37	.97	DW3R682K		
.0082	.09	.18	.40	DW3G822K	.13	.26	.40	DW3J822K	.16	.25	.97	DW3M822K	.30	.39	.97	DW3R822K		
.01	.15	.26	.40	DW3G103K	.13	.26	.53	DW3J103K	.17	.26	.97	DW3M103K	.34	.43	.97	DW3R103K		
.012	.14	.27	.53	DW3G123K	.14	.27	.53	DW3J123K	.19	.28	.97	DW3M123K	.37	.46	.97	DW3R123K		
.015	.15	.28	.53	DW3G153K	.16	.29	.53	DW3J153K	.21	.30	.97	DW3M153K	.41	.50	.97	DW3R153K		
.018	.15	.28	.53	DW3G183K	.18	.31	.53	DW3J183K	.23	.32	.97	DW3M183K	.45	.54	.97	DW3R183K		
.022	.15	.28	.53	DW3G223K	.20	.33	.53	DW3J223K	.25	.34	.97	DW3M223K	.27	.51	1.31	DW3R223K		
.027	.17	.30	.53	DW3G273K	.23	.35	.53	DW3J273K	.28	.37	.97	DW3M273K	.31	.55	1.31	DW3R273K		
.033	.18	.31	.53	DW3G333K	.19	.32	.65	DW3J333K	.31	.40	.97	DW3M333K	.35	.59	1.31	DW3R333K		
.039	.21	.34	.53	DW3G393K	.21	.34	.65	DW3J393K	.33	.42	.97	DW3M393K	.39	.62	1.31	DW3R393K		
.047	.22	.35	.53	DW3G473K	.25	.35	.65	DW3J473K	.36	.45	.97	DW3M473K	.43	.67	1.31	DW3R473K		
.056	.23	.35	.53	DW3G563K	.22	.35	.78	DW3J563K	.40	.49	.97	DW3M563K	.47	.71	1.31	DW3R563K		
.068	.24	.35	.53	DW3G683K	.25	.38	.78	DW3J683K	.44	.53	.97	DW3M683K	.53	.77	1.31	DW3R683K		
.082	.25	.34	.65	DW3G823K	.27	.40	.78	DW3J823K	.26	.50	1.31	DW3M823K	.46	.70	1.68	DW3R823K		
.10	.25	.35	.65	DW3G104K	.30	.43	.78	DW3J104K	.30	.54	1.31	DW3M104K	.51	.75	1.68	DW3R104K		
.12	.23	.36	.78	DW3G124K	.33	.46	.78	DW3J124K	.33	.57	1.31	DW3M124K	.58	.82	1.68	DW3R124K		
.15	.26	.39	.78	DW3G154K	.32	.45	.97	DW3J154K	.37	.61	1.31	DW3M154K	.66	.90	1.68	DW3R154K		
.18	.29	.42	.78	DW3G184K	.35	.48	.97	DW3J184K	.42	.66	1.31	DW3M184K	.72	.96	1.68	DW3R184K		
.22	.31	.44	.78	DW3G224K	.33	.46	1.17	DW3J224K	.47	.71	1.31	DW3M224K	.82	1.06	1.68	DW3R224K		
.25	.34	.47	.78	DW3G254K	.36	.49	1.17	DW3J254K	.50	.74	1.31	DW3M254K	.88	1.13	1.68	DW3R254K		
.27	.35	.48	.78	DW3G274K	.38	.51	1.17	DW3J274K	.53	.77	1.31	DW3M274K	.92	1.16	1.68	DW3R274K		
.33	.32	.44	.97	DW3G334K	.42	.55	1.17	DW3J334K	.46	.70	1.68	DW3M334K	1.05	1.29	1.68	DW3R334K		
.39	.31	.44	1.17	DW3G394K	.45	.60	1.17	DW3J394K	.51	.75	1.68	DW3M394K	.85	1.10	2.50	DW3R394K		
.47	.35	.48	1.17	DW3G474K	.50	.65	1.17	DW3J474K	.56	.80	1.68	DW3M474K	.95	1.19	2.50	DW3R474K		
.50	.36	.49	1.17	DW3G504K	.51	.67	1.17	DW3J504K	.58	.82	1.68	DW3M504K						
.56	.38	.52	1.17	DW3G564K	.43	.59	1.68	DW3J564K	.62	.86	1.68	DW3M564K						
.68	.42	.55	1.17	DW3G684K	.47	.63	1.68	DW3J684K	.69	.93	1.68	DW3M684K						
.75	.44	.57	1.17	DW3G754K	.49	.65	1.68	DW3J754K	.73	.97	1.68	DW3M754K						
.82	.46	.59	1.17	DW3G824K	.53	.69	1.68	DW3J824K	.77	1.01	1.68	DW3M824K						
1.0	.52	.65	1.17	DW3G105K	.59	.75	1.68	DW3J105K	.86	1.10	1.68	DW3M105K						
1.2	.40	.62	1.68	DW3G125K	.66	.83	1.68	DW3J125K	.73	.97	2.50	DW3M125K						
1.5	.45	.67	1.68	DW3G155K	.73	.90	1.68	DW3J155K	.80	1.04	2.50	DW3M155K						
1.8	.51	.72	1.68	DW3G185K	.79	1.00	1.68	DW3J185K	.89	1.13	2.50	DW3M185K						
2.0	.54	.76	1.68	DW3G205K	.83	1.04	1.68	DW3J205K	.94	1.18	2.50	DW3M205K						
3.0	.68	.90	1.68	DW3G305K	1.02	1.19	1.68	DW3J305K	1.17	1.41	2.50	DW3M305K						
4.0	.79	1.02	1.68	DW3G405K	1.02	1.20	2.25	DW3J405K	1.36	1.60	2.50	DW3M405K						
5.0	.90	1.13	1.68	DW3G505K	1.13	1.34	2.25	DW3J505K	1.53	1.77	2.50	DW3M505K						
6.0	.78	1.12	2.25	DW3G605K	1.24	1.48	2.25	DW3J605K	1.69	1.93	2.50	DW3M605K						
8.0	.90	1.24	2.25	DW3G805K	1.42	1.66	2.25	DW3J805K	1.70	1.94	3.25	DW3M805K						
10.0	1.11	1.34	2.25	DW3G106K	1.58	1.82	2.25	DW3J106K	1.90	2.14	3.25	DW3M106K						
12.0	1.17	1.41	2.25	DW3G126K	1.72	1.96	2.25	DW3J126K	2.08	2.32	3.25	DW3M126K						
15.0	1.30	1.54	2.25	DW3G156K	1.92	2.16	2.25	DW3J156K	2.33	2.57	3.25	DW3M156K						

TOLERANCE TABLE

Code	Tolerance
A	± 0.1% ♦
B	± 0.25% ♦
D	± 0.5% ♦
F	± 1% ♦
G	± 2% ♦
H	± 3% ♦
J	± 5%
K	± 10%
M	± 20%
N	± 30%
P	GMV
S	-10% +30%
T	-10% +50%
V	-10% +20%
X	Special
♦	Temperature Stabilized

Note: Replace the last digit **K** with the desired tolerance code from the tolerance table. For an in-between value use the next larger value's dimensions. Custom sizes are readily available. All dimensions are in inches. All +.05" dimension tolerances are Maximum.

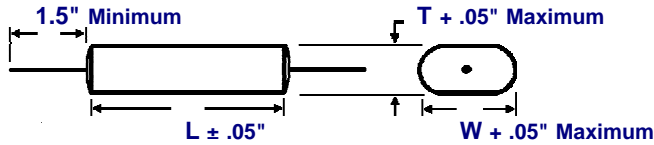
METALLIZED MYLAR WRAP AND FILL, OVAL AXIAL LEAD CAPACITORS



DW2
METALLIZED MYLAR
WRAP & FILL, OVAL
MINIATURE SERIES

DIMENSIONS See tables for specific T, W, L values.

WIRE SIZE (Length 1.5" Minimum)



BODY LENGTH (L)	WIRE SIZE	
	AWG No.	Diameter
≤ 0.65"	24	0.020"
> 0.65" ≤ 1.00"	22	0.025"
> 1.00"	20	0.032"

SELECTION AND ORDERING TABLES Select voltage rating, capacitance and tolerance, read Part Number to the right.

For UL 510 Flame Retardant Tape add -R to the end of Part Number.

MFD	100VDC 40VAC				200VDC 100VAC				400VDC 160VAC				600VDC 230VAC					
	RATING		T	W	L	PART #	T	W	L	PART #	T	W	L	PART #	T	W	L	PART #
	+ .05"	± .05"	+ .05"	+ .05"	± .05"	+ .05"	+ .05"	± .05"	+ .05"	+ .05"	± .05"	+ .05"	+ .05"	± .05"	+ .05"	+ .05"	± .05"	+ .05"
.001	.09	.18	.40	DW2D102K	.09	.18	.40	DW2E102K	.09	.18	.40	DW2G102K	.09	.18	.40	DW2J102K		
.0012	.09	.18	.40	DW2D122K	.09	.18	.40	DW2E122K	.09	.18	.40	DW2G122K	.09	.18	.40	DW2J122K		
.0018	.09	.18	.40	DW2D182K	.09	.18	.40	DW2E182K	.09	.18	.40	DW2G182K	.09	.18	.40	DW2J182K		
.0022	.09	.18	.40	DW2D222K	.09	.18	.40	DW2E222K	.09	.18	.40	DW2G222K	.09	.18	.40	DW2J222K		
.0027	.09	.18	.40	DW2D272K	.09	.18	.40	DW2E272K	.09	.18	.40	DW2G272K	.10	.19	.40	DW2J272K		
.0033	.09	.18	.40	DW2D332K	.09	.18	.40	DW2E332K	.09	.18	.40	DW2G332K	.09	.18	.53	DW2J332K		
.0047	.09	.18	.40	DW2D472K	.09	.18	.40	DW2E472K	.09	.18	.40	DW2G472K	.09	.18	.53	DW2J472K		
.0056	.09	.18	.40	DW2D562K	.09	.18	.40	DW2E562K	.10	.20	.40	DW2G562K	.09	.18	.53	DW2J562K		
.0068	.09	.18	.40	DW2D682K	.09	.18	.40	DW2E682K	.11	.21	.40	DW2G682K	.11	.20	.53	DW2J682K		
.0082	.09	.18	.40	DW2D822K	.09	.18	.40	DW2E822K	.09	.18	.53	DW2G822K	.12	.22	.53	DW2J822K		
.01	.09	.18	.40	DW2D103K	.09	.18	.40	DW2E103K	.09	.18	.53	DW2G103K	.14	.23	.53	DW2J103K		
.012	.09	.18	.40	DW2D123K	.09	.18	.40	DW2E123K	.09	.18	.53	DW2G123K	.15	.25	.53	DW2J123K		
.015	.09	.18	.40	DW2D153K	.09	.18	.40	DW2E153K	.09	.18	.53	DW2G153K	.18	.27	.53	DW2J153K		
.018	.09	.18	.40	DW2D183K	.10	.20	.40	DW2E183K	.11	.20	.53	DW2G183K	.20	.29	.53	DW2J183K		
.022	.09	.18	.40	DW2D223K	.09	.18	.53	DW2E223K	.12	.22	.53	DW2G223K	.22	.32	.53	DW2J223K		
.027	.09	.18	.40	DW2D273K	.09	.18	.53	DW2E273K	.14	.23	.53	DW2G273K	.20	.29	.65	DW2J273K		
.033	.09	.18	.40	DW2D333K	.09	.18	.53	DW2E333K	.16	.25	.53	DW2G333K	.22	.31	.65	DW2J333K		
.039	.09	.18	.40	DW2D393K	.09	.18	.53	DW2E393K	.17	.27	.53	DW2G393K	.20	.30	.78	DW2J393K		
.047	.09	.18	.40	DW2D473K	.09	.18	.53	DW2E473K	.19	.29	.53	DW2G473K	.25	.32	.78	DW2J473K		
.056	.09	.18	.40	DW2D563K	.11	.20	.53	DW2E563K	.22	.31	.53	DW2G563K	.25	.34	.78	DW2J563K		
.068	.10	.19	.40	DW2D683K	.12	.22	.53	DW2E683K	.18	.27	.65	DW2G683K	.28	.37	.78	DW2J683K		
.082	.11	.20	.40	DW2D823K	.14	.23	.53	DW2E823K	.20	.29	.65	DW2G823K	.31	.41	.78	DW2J823K		
.10	.09	.18	.53	DW2D104K	.16	.25	.53	DW2E104K	.22	.32	.65	DW2G104K	.31	.40	.95	DW2J104K		
.12	.09	.18	.53	DW2D124K	.17	.27	.53	DW2E124K	.20	.30	.78	DW2G124K	.24	.41	1.17	DW2J124K		
.15	.09	.18	.53	DW2D154K	.20	.29	.53	DW2E154K	.23	.33	.78	DW2G154K	.28	.44	1.17	DW2J154K		
.18	.09	.18	.53	DW2D184K	.22	.32	.53	DW2E184K	.26	.34	.78	DW2G184K	.31	.48	1.17	DW2J184K		
.22	.10	.20	.53	DW2D224K	.18	.28	.65	DW2E224K	.29	.39	.78	DW2G224K	.35	.52	1.17	DW2J224K		
.27	.12	.22	.53	DW2D274K	.20	.29	.65	DW2E274K	.33	.42	.78	DW2G274K	.40	.57	1.17	DW2J274K		
.33	.14	.23	.53	DW2D334K	.24	.33	.65	DW2E334K	.32	.41	.95	DW2G334K	.45	.61	1.17	DW2J334K		
.39	.15	.25	.53	DW2D394K	.21	.30	.78	DW2E394K	.25	.42	1.17	DW2G394K	.43	.59	1.45	DW2J394K		
.47	.17	.27	.53	DW2D474K	.24	.33	.78	DW2E474K	.28	.45	1.17	DW2G474K	.48	.65	1.45	DW2J474K		
.56	.19	.28	.53	DW2D564K	.26	.36	.78	DW2E564K	.31	.48	1.17	DW2G564K	.47	.63	1.68	DW2J564K		
.68	.22	.31	.53	DW2D684K	.29	.39	.78	DW2E684K	.35	.52	1.17	DW2G684K	.47	.64	1.90	DW2J684K		
.82	.18	.27	.65	DW2D824K	.33	.42	.78	DW2E824K	.39	.56	1.17	DW2G824K	.53	.70	1.90	DW2J824K		
1.0	.20	.29	.65	DW2D105K	.32	.41	.95	DW2E105K	.44	.61	1.17	DW2G105K	.59	.76	1.90	DW2J105K		
1.2	.22	.32	.65	DW2D125K	.25	.42	1.17	DW2E125K	.42	.59	1.45	DW2G125K	.66	.82	1.90	DW2J125K		
1.5	.21	.30	.78	DW2D155K	.29	.45	1.17	DW2E155K	.48	.65	1.45	DW2G155K	.75	.91	1.90	DW2J155K		
1.8	.24	.36	.78	DW2D185K	.32	.49	1.17	DW2E185K	.47	.64	1.68	DW2G185K						
2.0	.28	.37	.78	DW2D205K	.38	.52	1.17	DW2E205K	.45	.62	1.90	DW2G205K						
3.0	.34	.44	.78	DW2D305K	.44	.61	1.17	DW2E305K	.57	.74	1.90	DW2G305K						
4.0	.32	.46	.95	DW2D405K	.44	.61	1.45	DW2E405K	.68	.84	1.90	DW2G405K						
5.0	.28	.44	1.17	DW2D505K	.45	.61	1.68	DW2E505K	.77	.93	1.90	DW2G505K						
6.0	.33	.49	1.17	DW2D605K	.52	.69	1.68	DW2E605K										
8.0	.35	.51	1.17	DW2D805K	.53	.70	1.90	DW2E805K										
10.0	.46	.63	1.17	DW2D106K	.70	.87	1.90	DW2E106K										
12.0	.51	.68	1.17	DW2D126K	.78	.95	1.90	DW2E126K										
15.0	.50	.67	1.45	DW2D156K	.87	1.04	1.90	DW2E156K										
18.0	.56	.72	1.45	DW2D186K	.95	1.12	1.90	DW2E186K										
20.0	.52	.68	1.68	DW2D206K	1.01	1.18	1.90	DW2E206K										
30.0	.59	.75	1.90	DW2D306K														
40.0	.72	.88	1.90	DW2D406K														
50.0	.79	.95	1.90	DW2D506K														

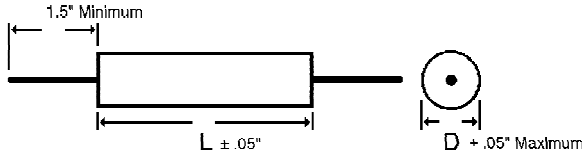
Note: Replace the last digit **K** with the desired tolerance code from the tolerance table. For an in-between value use the next larger value's dimensions. Custom sizes are readily available. All dimensions are in inches. All +.05" dimension tolerances are Maximum.

METALLIZED MYLAR WRAP AND FILL, ROUND AXIAL LEAD CAPACITORS



DR2
METALLIZED MYLAR
WRAP & FILL, ROUND
MINIATURE SERIES

DIMENSIONS See tables for specific D, L values.



WIRE SIZE (Length 1.5" Minimum)

BODY LENGTH (L)	WIRE SIZE	
	AWG No.	Diameter
≤ 0.65"	24	0.020"
> 0.65" ≤ 1.00"	22	0.025"
> 1.00"	20	0.032"

For UL 510 Flame Retardant Tape add -R to the end of Part Number.

SELECTION AND ORDERING TABLES Select voltage rating, capacitance and tolerance, read Part Number to the right.

MFD	100VDC 40VAC			200VDC 100VAC			400VDC 160VAC			600VDC 230VAC		
	RATING	D + .05"	L ± .05"	PART #	D + .05"	L ± .05"	PART #	D + .05"	L ± .05"	PART #	D + .05"	L ± .05"
.001	.15	.40	DR2D102K	.15	.40	DR2E102K	.15	.40	DR2G102K	.15	.40	DR2J102K
.0012	.15	.40	DR2D122K	.15	.40	DR2E122K	.15	.40	DR2G122K	.15	.40	DR2J122K
.0018	.15	.40	DR2D182K	.15	.40	DR2E182K	.15	.40	DR2G182K	.15	.40	DR2J182K
.0022	.15	.40	DR2D222K	.15	.40	DR2E222K	.15	.40	DR2G222K	.15	.40	DR2J222K
.0027	.15	.40	DR2D272K	.15	.40	DR2E272K	.15	.40	DR2G272K	.16	.40	DR2J272K
.0033	.15	.40	DR2D332K	.15	.40	DR2E332K	.15	.40	DR2G332K	.15	.53	DR2J332K
.0047	.15	.40	DR2D472K	.15	.40	DR2E472K	.15	.40	DR2G472K	.15	.53	DR2J472K
.0056	.15	.40	DR2D562K	.15	.40	DR2E562K	.16	.40	DR2G562K	.15	.53	DR2J562K
.0068	.15	.40	DR2D682K	.15	.40	DR2E682K	.17	.40	DR2G682K	.17	.53	DR2J682K
.0082	.15	.40	DR2D822K	.15	.40	DR2E822K	.15	.53	DR2G822K	.18	.53	DR2J822K
.01	.15	.40	DR2D103K	.15	.40	DR2E103K	.15	.53	DR2G103K	.20	.53	DR2J103K
.012	.15	.40	DR2D123K	.15	.40	DR2E123K	.15	.53	DR2G123K	.21	.53	DR2J123K
.015	.15	.40	DR2D153K	.15	.40	DR2E153K	.15	.53	DR2G153K	.24	.53	DR2J153K
.018	.15	.40	DR2D183K	.16	.40	DR2E183K	.17	.53	DR2G183K	.26	.53	DR2J183K
.022	.15	.40	DR2D223K	.15	.53	DR2E223K	.18	.53	DR2G223K	.28	.53	DR2J223K
.027	.15	.40	DR2D273K	.15	.53	DR2E273K	.20	.53	DR2G273K	.26	.65	DR2J273K
.033	.15	.40	DR2D333K	.15	.53	DR2E333K	.22	.53	DR2G333K	.28	.65	DR2J333K
.039	.15	.40	DR2D393K	.15	.53	DR2E393K	.23	.53	DR2G393K	.26	.78	DR2J393K
.047	.15	.40	DR2D473K	.15	.53	DR2E473K	.25	.53	DR2G473K	.28	.78	DR2J473K
.056	.15	.40	DR2D563K	.17	.53	DR2E563K	.25	.53	DR2G563K	.31	.78	DR2J563K
.068	.16	.40	DR2D683K	.18	.53	DR2E683K	.24	.65	DR2G683K	.34	.78	DR2J683K
.082	.17	.40	DR2D823K	.20	.53	DR2E823K	.26	.65	DR2G823K	.37	.78	DR2J823K
.10	.15	.53	DR2D104K	.22	.53	DR2E104K	.28	.65	DR2G104K	.37	.95	DR2J104K
.12	.15	.53	DR2D124K	.23	.53	DR2E124K	.26	.78	DR2G124K	.35	1.17	DR2J124K
.15	.15	.53	DR2D154K	.26	.53	DR2E154K	.29	.78	DR2G154K	.38	1.17	DR2J154K
.18	.15	.53	DR2D184K	.28	.53	DR2E184K	.32	.78	DR2G184K	.42	1.17	DR2J184K
.22	.16	.53	DR2D224K	.24	.65	DR2E224K	.35	.78	DR2G224K	.46	1.17	DR2J224K
.27	.18	.53	DR2D274K	.26	.65	DR2E274K	.39	.78	DR2G274K	.51	1.17	DR2J274K
.33	.20	.53	DR2D334K	.30	.65	DR2E334K	.38	.95	DR2G334K	.55	1.17	DR2J334K
.39	.21	.53	DR2D394K	.27	.78	DR2E394K	.36	1.17	DR2G394K	.53	1.45	DR2J394K
.47	.23	.53	DR2D474K	.30	.78	DR2E474K	.39	1.17	DR2G474K	.59	1.45	DR2J474K
.56	.25	.53	DR2D564K	.32	.78	DR2E564K	.42	1.17	DR2G564K	.57	1.68	DR2J564K
.68	.28	.53	DR2D684K	.35	.78	DR2E684K	.46	1.17	DR2G684K	.58	1.90	DR2J684K
.82	.24	.65	DR2D824K	.39	.78	DR2E824K	.50	1.17	DR2G824K	.64	1.90	DR2J824K
1.0	.26	.65	DR2D105K	.38	.95	DR2E105K	.55	1.17	DR2G105K			
1.2	.28	.65	DR2D125K	.36	1.17	DR2E125K	.53	1.45	DR2G125K			
1.5	.27	.78	DR2D155K	.39	1.17	DR2E155K	.59	1.45	DR2G155K			
1.8	.29	.78	DR2D185K	.43	1.17	DR2E185K	.58	1.68	DR2G185K			
2.0	.34	.78	DR2D205K	.45	1.17	DR2E205K	.56	1.90	DR2G205K			
3.0	.41	.78	DR2D305K	.55	1.17	DR2E305K	.68	1.90	DR2G305K			
4.0	.38	.95	DR2D405K	.55	1.45	DR2E405K	.78	1.90	DR2G405K			
5.0	.36	1.17	DR2D505K	.55	1.68	DR2E505K	.87	1.90	DR2G505K			
6.0	.39	1.17	DR2D605K	.59	1.68	DR2E605K						
8.0	.45	1.17	DR2D805K	.64	1.90	DR2E805K						
10.0	.57	1.17	DR2D106K	.81	1.90	DR2E106K						
12.0	.62	1.17	DR2D126K	.89	1.90	DR2E126K						
15.0	.61	1.45	DR2D156K	.98	1.90	DR2E156K						
18.0	.66	1.45	DR2D186K	1.06	1.90	DR2E186K						
20.0	.63	1.68	DR2D206K	1.12	1.90	DR2E206K						
30.0	.70	1.90	DR2D306K									
40.0	.83	1.90	DR2D406K									
50.0	.90	1.90	DR2D506K									

TOLERANCE TABLE

Code	Tolerance
A	± 0.1% ♦
B	± 0.25% ♦
D	± 0.5% ♦
F	± 1% ♦
G	± 2% ♦
H	± 3% ♦
J	± 5%
K	± 10%
M	± 20%
N	± 30%
P	GMV
S	-10% +30%
T	-10% +50%
V	-10% +20%
X	Special

♦ Temperature Stabilized

Note: Replace the last digit **K** with the desired tolerance code from the tolerance table. For an in-between value use the next larger value's dimensions. Custom sizes are readily available. All dimensions are in inches. All +.05" dimension tolerances are Maximum.

METALLIZED MYLAR WRAP AND FILL, ROUND AXIAL LEAD CAPACITORS



DR3
METALLIZED MYLAR
WRAP & FILL, ROUND
REGULAR SERIES

ORDERING DESCRIPTION

Capacitor, fixed: Metallized Mylar dielectric; extended foil construction; tin-plated copper-clad steel wire axial leads; encased in skin-tight plastic wrap with epoxy end fill. In addition to the standard Tape, New Flame Retardant Tape is available meeting UL 510 Flame Retardant Specifications.

APPLICATION NOTES

Wrap & Fill capacitors are not intended for exposure to high humidity conditions over extended periods of time. For stringent environmental conditions, Wrap & Fill capacitors should be used in encapsulated or hermetically sealed circuitry. For UL 510 Flame Retardant Tape add -R to the end of the Part Number.

SELECTION AND ORDERING TABLES Select voltage rating, capacitance and tolerance, read Part Number to the right.

MFD	35VDC 20VAC			50VDC 40VAC			100VDC 70VAC			200VDC 120VAC		
	RATING	D +.05"	L ±.05"	PART #	D +.05"	L ±.05"	PART #	D +.05"	L ±.05"	PART #	D +.05"	L ±.05"
.001	.15	.40	DR3S102K	.15	.40	DR3C102K	.15	.40	DR3D102K	.15	.40	DR3E102K
.0027	.15	.40	DR3S272K	.15	.40	DR3C272K	.15	.40	DR3D272K	.15	.40	DR3E272K
.0033	.15	.40	DR3S332K	.15	.40	DR3C332K	.15	.40	DR3D332K	.15	.40	DR3E332K
.0056	.15	.40	DR3S562K	.15	.40	DR3C562K	.15	.40	DR3D562K	.15	.40	DR3E562K
.0068	.15	.40	DR3S682K	.15	.40	DR3C682K	.15	.40	DR3D682K	.15	.40	DR3E682K
.0082	.15	.40	DR3S822K	.15	.40	DR3C822K	.15	.40	DR3D822K	.15	.40	DR3E822K
.01	.15	.40	DR3S103K	.15	.40	DR3C103K	.15	.40	DR3D103K	.16	.40	DR3E103K
.012	.15	.40	DR3S123K	.15	.40	DR3C123K	.15	.40	DR3D123K	.16	.40	DR3E123K
.015	.15	.40	DR3S153K	.15	.40	DR3C153K	.15	.40	DR3D153K	.16	.40	DR3E153K
.018	.15	.40	DR3S183K	.15	.40	DR3C183K	.15	.40	DR3D183K	.17	.40	DR3E183K
.022	.15	.40	DR3S223K	.15	.40	DR3C223K	.15	.40	DR3D223K	.18	.40	DR3E223K
.027	.15	.40	DR3S273K	.15	.40	DR3C273K	.15	.40	DR3D273K	.21	.40	DR3E273K
.033	.15	.40	DR3S333K	.15	.40	DR3C333K	.16	.40	DR3D333K	.22	.40	DR3E333K
.039	.15	.40	DR3S393K	.15	.40	DR3C393K	.19	.40	DR3D393K	.23	.40	DR3E393K
.047	.15	.40	DR3S473K	.15	.40	DR3C473K	.20	.40	DR3D473K	.24	.40	DR3E473K
.056	.15	.40	DR3S563K	.15	.40	DR3C563K	.22	.40	DR3D563K	.25	.53	DR3E563K
.068	.15	.40	DR3S683K	.16	.40	DR3C683K	.23	.40	DR3D683K	.26	.53	DR3E683K
.082	.15	.40	DR3S823K	.17	.40	DR3C823K	.18	.53	DR3D823K	.27	.53	DR3E823K
.10	.15	.40	DR3S104K	.20	.40	DR3C104K	.20	.53	DR3D104K	.31	.53	DR3E104K
.12	.15	.40	DR3S124K	.21	.40	DR3C124K	.22	.53	DR3D124K	.32	.53	DR3E124K
.15	.15	.40	DR3S154K	.17	.53	DR3C154K	.24	.53	DR3D154K	.30	.65	DR3E154K
.18	.16	.40	DR3S184K	.18	.53	DR3C184K	.26	.53	DR3D184K	.33	.65	DR3E184K
.22	.17	.40	DR3S224K	.19	.53	DR3C224K	.28	.53	DR3D224K	.34	.65	DR3E224K
.25	.18	.40	DR3S254K	.20	.53	DR3C254K	.25	.65	DR3D254K	.33	.78	DR3E254K
.27	.19	.40	DR3S274K	.22	.53	DR3C274K	.26	.65	DR3D274K	.34	.78	DR3E274K
.33	.21	.40	DR3S334K	.23	.53	DR3C334K	.28	.65	DR3D334K	.37	.78	DR3E334K
.39	.22	.40	DR3S394K	.24	.53	DR3C394K	.26	.78	DR3D394K	.39	.78	DR3E394K
.47	.24	.40	DR3S474K	.26	.53	DR3C474K	.28	.78	DR3D474K	.41	.78	DR3E474K
.50	.18	.53	DR3S504K	.27	.53	DR3C504K	.29	.78	DR3D504K	.42	.78	DR3E504K
.56	.18	.53	DR3S564K	.28	.53	DR3C564K	.30	.78	DR3D564K	.40	.97	DR3E564K
.68	.19	.53	DR3S684K	.31	.53	DR3C684K	.32	.78	DR3D684K	.42	.97	DR3E684K
.75	.20	.53	DR3S754K	.32	.53	DR3C754K	.35	.78	DR3D754K	.44	.97	DR3E754K
.82	.20	.53	DR3S824K	.28	.65	DR3C824K	.36	.78	DR3D824K	.42	1.17	DR3E824K
1.0	.23	.53	DR3S105K	.30	.65	DR3C105K	.34	.97	DR3D105K	.45	1.17	DR3E105K
1.2	.25	.53	DR3S125K	.27	.78	DR3C125K	.36	.97	DR3D125K	.40	1.68	DR3E125K
1.5	.28	.53	DR3S155K	.30	.78	DR3C155K	.40	.97	DR3D155K	.43	1.68	DR3E155K
1.8	.30	.53	DR3S185K	.36	.78	DR3C185K	.44	.97	DR3D185K	.47	1.68	DR3E185K
2.0	.31	.53	DR3S205K	.37	.78	DR3C205K	.45	.97	DR3D205K	.49	1.68	DR3E205K
3.0	.30	.65	DR3S305K	.37	.97	DR3C305K	.48	1.17	DR3D305K	.59	1.68	DR3E305K
4.0	.30	.78	DR3S405K	.42	1.17	DR3C405K	.45	1.68	DR3D405K	.70	1.68	DR3E405K
5.0	.34	.78	DR3S505K	.45	1.17	DR3C505K	.49	1.68	DR3D505K	.76	1.68	DR3E505K
6.0	.37	.78	DR3S605K	.48	1.17	DR3C605K	.51	2.00	DR3D605K	.82	1.68	DR3E605K
8.0	.38	.97	DR3S805K	.55	1.17	DR3C805K	.56	2.00	DR3D805K	.91	1.68	DR3E805K
10.0	.43	.97	DR3S106K	.61	1.17	DR3C106K	.62	2.00	DR3D106K	.99	1.68	DR3E106K
12.0	.36	1.17	DR3S126K	.73	1.17	DR3C126K	.67	2.00	DR3D126K	.99	2.25	DR3E126K
15.0	.41	1.17	DR3S156K	.58	1.68	DR3C156K	.72	2.00	DR3D156K	1.07	2.25	DR3E156K
20.0	.46	1.17	DR3S206K	.69	1.68	DR3C206K	.83	2.00	DR3D206K	1.23	2.25	DR3E206K
30.0	.58	1.17	DR3S306K	.80	1.68	DR3C306K	.98	2.00	DR3D306K	1.47	2.25	DR3E306K
40.0	.67	1.17	DR3S406K	.89	1.68	DR3C406K	1.10	2.00	DR3D406K	1.44	3.25	DR3E406K
50.0	.76	1.45	DR3S506K	.98	1.68	DR3C506K	1.22	2.00	DR3D506K	1.57	3.25	DR3E506K
75.0	.83	1.68	DR3S756K	1.15	1.68	DR3C756K	1.48	2.00	DR3D756K	1.89	3.25	DR3E756K
100.0	.81	2.25	DR3S107K	1.32	1.68	DR3C107K	1.70	2.00	DR3D107K	2.15	3.25	DR3E107K

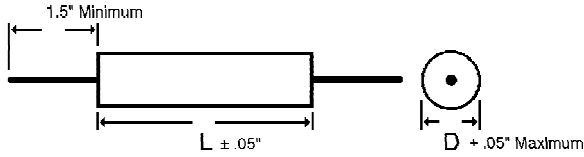
Note: Replace the last digit **K** with the desired tolerance code from the tolerance table. For an in-between value use the next larger value's dimensions. Custom sizes are readily available. All dimensions are in inches. All +.05" dimension tolerances are Maximum.

METALLIZED MYLAR WRAP AND FILL, ROUND AXIAL LEAD CAPACITORS



DR3
METALLIZED MYLAR
WRAP & FILL, ROUND
REGULAR SERIES

DIMENSIONS See tables for specific D, L values.



WIRE SIZE (Length 1.5" Minimum)

BODY LENGTH (L)	WIRE SIZE	
	AWG No.	Diameter
≤ 0.65"	24	0.020"
> 0.65" ≤ 1.00"	22	0.025"
> 1.00"	20	0.032"

For UL 510 Flame Retardant Tape add -R to the end of Part Number.

SELECTION AND ORDERING TABLES Select voltage rating, capacitance and tolerance, read Part Number to the right.

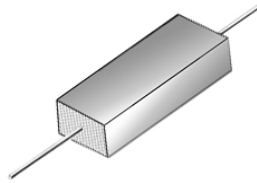
MFD	400VDC 160VAC			600VDC 230VAC			1000VDC 360VAC			2000VDC 700VAC			
	RATING	D	L	PART #	D	L	PART #	D	L	PART #	D	L	PART #
	+ .05"	± .05"		+ .05"	± .05"		+ .05"	± .05"		+ .05"	± .05"		
.001	.15	.40	DR3G102K	.15	.40	DR3J102K	.20	.97	DR3M102K	.20	.97	DR3R102K	
.0012	.15	.40	DR3G122K	.15	.40	DR3J122K	.20	.97	DR3M122K	.20	.97	DR3R122K	
.0015	.15	.40	DR3G152K	.15	.40	DR3J152K	.20	.97	DR3M152K	.20	.97	DR3R152K	
.0018	.15	.40	DR3G182K	.15	.40	DR3J182K	.20	.97	DR3M182K	.20	.97	DR3R182K	
.0022	.15	.40	DR3G222K	.15	.40	DR3J222K	.21	.97	DR3M222K	.22	.97	DR3R222K	
.0027	.15	.40	DR3G272K	.15	.40	DR3J272K	.21	.97	DR3M272K	.23	.97	DR3R272K	
.0033	.15	.40	DR3G332K	.15	.40	DR3J332K	.21	.97	DR3M332K	.25	.97	DR3R332K	
.0039	.15	.40	DR3G392K	.15	.40	DR3J392K	.21	.97	DR3M392K	.27	.97	DR3R392K	
.0047	.15	.40	DR3G472K	.15	.40	DR3J472K	.22	.97	DR3M472K	.29	.97	DR3R472K	
.0056	.15	.40	DR3G562K	.16	.40	DR3J562K	.22	.97	DR3M562K	.31	.97	DR3R562K	
.0068	.15	.40	DR3G682K	.17	.40	DR3J682K	.22	.97	DR3M682K	.34	.97	DR3R682K	
.0082	.15	.40	DR3G822K	.19	.40	DR3J822K	.22	.97	DR3M822K	.36	.97	DR3R822K	
.01	.21	.53	DR3G103K	.20	.53	DR3J103K	.23	.97	DR3M103K	.40	.97	DR3R103K	
.012	.20	.53	DR3G123K	.21	.53	DR3J123K	.25	.97	DR3M123K	.43	.97	DR3R123K	
.015	.21	.53	DR3G153K	.25	.53	DR3J153K	.27	.97	DR3M153K	.47	.97	DR3R153K	
.018	.21	.53	DR3G183K	.27	.53	DR3J183K	.30	.97	DR3M183K	.51	.97	DR3R183K	
.022	.21	.53	DR3G223K	.29	.53	DR3J223K	.31	.97	DR3M223K	.43	1.31	DR3R223K	
.027	.23	.53	DR3G273K	.32	.53	DR3J273K	.34	.97	DR3M273K	.47	1.31	DR3R273K	
.033	.24	.53	DR3G333K	.28	.65	DR3J333K	.37	.97	DR3M333K	.51	1.31	DR3R333K	
.039	.27	.53	DR3G393K	.30	.65	DR3J393K	.40	.97	DR3M393K	.55	1.31	DR3R393K	
.047	.28	.53	DR3G473K	.34	.65	DR3J473K	.43	.97	DR3M473K	.59	1.31	DR3R473K	
.056	.29	.53	DR3G563K	.31	.78	DR3J563K	.46	.97	DR3M563K	.63	1.31	DR3R563K	
.068	.30	.53	DR3G683K	.34	.78	DR3J683K	.50	.97	DR3M683K	.69	1.31	DR3R683K	
.082	.31	.65	DR3G823K	.36	.78	DR3J823K	.42	1.31	DR3M823K	.62	1.68	DR3R823K	
.10	.31	.65	DR3G104K	.39	.78	DR3J104K	.45	1.31	DR3M104K	.67	1.68	DR3R104K	
.12	.29	.78	DR3G124K	.42	.78	DR3J124K	.49	1.31	DR3M124K	.74	1.68	DR3R124K	
.15	.32	.78	DR3G154K	.41	.97	DR3J154K	.53	1.31	DR3M154K	.82	1.68	DR3R154K	
.18	.35	.78	DR3G184K	.44	.97	DR3J184K	.57	1.31	DR3M184K	.88	1.68	DR3R184K	
.22	.37	.78	DR3G224K	.42	1.17	DR3J224K	.62	1.31	DR3M224K	.98	1.68	DR3R224K	
.25	.39	.78	DR3G254K	.45	1.17	DR3J254K	.66	1.31	DR3M254K	1.04	1.68	DR3R254K	
.27	.41	.78	DR3G274K	.47	1.17	DR3J274K	.68	1.31	DR3M274K	1.08	1.68	DR3R274K	
.33	.38	.97	DR3G334K	.53	1.17	DR3J334K	.62	1.68	DR3M334K	1.21	1.68	DR3R334K	
.39	.37	1.17	DR3G394K	.56	1.17	DR3J394K	.66	1.68	DR3M394K	1.01	2.50	DR3R394K	
.47	.41	1.17	DR3G474K	.61	1.17	DR3J474K	.72	1.68	DR3M474K	1.11	2.50	DR3R474K	
.50	.43	1.17	DR3G504K	.63	1.17	DR3J504K	.74	1.68	DR3M504K				
.56	.44	1.17	DR3G564K	.54	1.68	DR3J564K	.79	1.68	DR3M564K				
.68	.48	1.17	DR3G684K	.58	1.68	DR3J684K	.85	1.68	DR3M684K				
.75	.50	1.17	DR3G754K	.61	1.68	DR3J754K	.89	1.68	DR3M754K				
.82	.52	1.17	DR3G824K	.64	1.68	DR3J824K	.93	1.68	DR3M824K				
1.0	.58	1.17	DR3G105K	.70	1.68	DR3J105K	1.03	1.68	DR3M105K				
1.2	.52	1.68	DR3G125K	.77	1.68	DR3J125K	.86	2.50	DR3M125K				
1.5	.57	1.68	DR3G155K	.84	1.68	DR3J155K	.96	2.50	DR3M155K				
1.8	.63	1.68	DR3G185K	.91	1.68	DR3J185K	1.05	2.50	DR3M185K				
2.0	.66	1.68	DR3G205K	.95	1.68	DR3J205K	1.09	2.50	DR3M205K				
3.0	.80	1.68	DR3G305K	1.14	1.68	DR3J305K	1.32	2.50	DR3M305K				
4.0	.91	1.68	DR3G405K	1.14	2.25	DR3J405K	1.52	2.50	DR3M405K				
5.0	.99	1.68	DR3G505K	1.25	2.25	DR3J505K	1.69	2.50	DR3M505K				
6.0	.90	2.25	DR3G605K	1.40	2.25	DR3J605K	1.85	2.50	DR3M605K				
8.0	1.02	2.25	DR3G805K	1.58	2.25	DR3J805K	1.86	3.25	DR3M805K				
10.0	1.23	2.25	DR3G106K	1.74	2.25	DR3J106K	2.06	3.25	DR3M106K				
12.0	1.33	2.25	DR3G126K	1.88	2.25	DR3J126K	2.24	3.25	DR3M126K				
15.0	1.46	2.25	DR3G156K	2.08	2.25	DR3J156K	2.49	3.25	DR3M156K				

TOLERANCE TABLE

Code	Tolerance
A	± 0.1% ♦
B	± 0.25% ♦
D	± 0.5% ♦
F	± 1% ♦
G	± 2% ♦
H	± 3% ♦
J	± 5%
K	± 10%
M	± 20%
N	± 30%
P	GMV
S	-10% +30%
T	-10% +50%
V	-10% +20%
X	Special
♦	Temperature Stabilized

Note: Replace the last digit **K** with the desired tolerance code from the tolerance table. For an in-between value use the next larger value's dimensions. Custom sizes are readily available. All dimensions are in inches. All +.05" dimension tolerances are Maximum.

METALLIZED MYLAR EPOXY CASE, AXIAL LEAD, RECTANGULAR CAPACITORS



DE3

METALLIZED MYLAR
EPOXY CASE, AXIAL, RECT.
REGULAR SERIES

ORDERING DESCRIPTION

Capacitor, fixed: Metallized Mylar dielectric; extended foil construction; tin-plated copper-clad steel wire axial leads; encased in a molded epoxy/plastic shell with epoxy fill.

APPLICATION NOTES

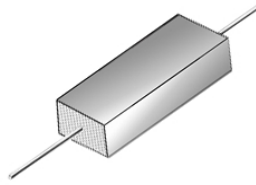
Epoxy Case capacitors are not intended for exposure to high humidity conditions over extended periods of time. For stringent environmental conditions, Epoxy Case capacitors should be used in encapsulated or hermetically sealed circuitry.

SELECTION AND ORDERING TABLES Select voltage rating, capacitance and tolerance, read Part Number to the right.

MFD	35VDC 20VAC				50VDC 40VAC				100VDC 70VAC				200VDC 120VAC			
	T	W	L	PART #	T	W	L	PART #	T	W	L	PART #	T	W	L	PART #
RATING	± .01"	± .01"	± .03"		± .01"	± .01"	± .03"		± .01"	± .01"	± .03"		± .01"	± .01"	± .03"	
.001	.17	.29	.42	DE3S102K	.17	.29	.42	DE3C102K	.17	.29	.42	DE3D102K	.17	.29	.42	DE3E102K
.0027	.17	.29	.42	DE3S272K	.17	.29	.42	DE3C272K	.17	.29	.42	DE3D272K	.17	.29	.42	DE3E272K
.0033	.17	.29	.42	DE3S332K	.17	.29	.42	DE3C332K	.17	.29	.42	DE3D332K	.17	.29	.42	DE3E332K
.0056	.17	.29	.42	DE3S562K	.17	.29	.42	DE3C562K	.17	.29	.42	DE3D562K	.17	.29	.42	DE3E562K
.0068	.17	.29	.42	DE3S682K	.17	.29	.42	DE3C682K	.17	.29	.42	DE3D682K	.17	.29	.42	DE3E682K
.0082	.17	.29	.42	DE3S822K	.17	.29	.42	DE3C822K	.17	.29	.42	DE3D822K	.17	.29	.42	DE3E822K
.01	.17	.29	.42	DE3S103K	.17	.29	.42	DE3C103K	.17	.29	.42	DE3D103K	.17	.29	.42	DE3E103K
.012	.17	.29	.42	DE3S123K	.17	.29	.42	DE3C123K	.17	.29	.42	DE3D123K	.17	.29	.42	DE3E123K
.015	.17	.29	.42	DE3S153K	.17	.29	.42	DE3C153K	.17	.29	.42	DE3D153K	.17	.29	.42	DE3E153K
.018	.17	.29	.42	DE3S183K	.17	.29	.42	DE3C183K	.17	.29	.42	DE3D183K	.17	.29	.42	DE3E183K
.022	.17	.29	.42	DE3S223K	.17	.29	.42	DE3C223K	.17	.29	.42	DE3D223K	.17	.29	.42	DE3E223K
.027	.17	.29	.42	DE3S273K	.17	.29	.42	DE3C273K	.17	.29	.42	DE3D273K	.17	.29	.57	DE3E273K
.033	.17	.29	.42	DE3S333K	.17	.29	.42	DE3C333K	.17	.29	.42	DE3D333K	.17	.29	.57	DE3E333K
.039	.17	.29	.42	DE3S393K	.17	.29	.42	DE3C393K	.17	.29	.42	DE3D393K	.17	.29	.57	DE3E393K
.047	.17	.29	.42	DE3S473K	.17	.29	.42	DE3C473K	.17	.29	.42	DE3D473K	.23	.36	.55	DE3E473K
.056	.17	.29	.42	DE3S563K	.17	.29	.42	DE3C563K	.17	.29	.57	DE3D563K	.23	.36	.55	DE3E563K
.068	.17	.29	.42	DE3S683K	.17	.29	.42	DE3C683K	.17	.29	.57	DE3D683K	.23	.36	.55	DE3E683K
.082	.17	.29	.42	DE3S823K	.17	.29	.42	DE3C823K	.17	.29	.57	DE3D823K	.23	.36	.55	DE3E823K
.10	.17	.29	.42	DE3S104K	.17	.29	.42	DE3C104K	.17	.29	.57	DE3D104K	.29	.42	.57	DE3E104K
.12	.17	.29	.42	DE3S124K	.17	.29	.42	DE3C124K	.17	.29	.57	DE3D124K	.29	.42	.57	DE3E124K
.15	.17	.29	.42	DE3S154K	.17	.29	.57	DE3C154K	.23	.36	.55	DE3D154K	.29	.42	.67	DE3E154K
.18	.17	.29	.42	DE3S184K	.17	.29	.57	DE3C184K	.23	.36	.55	DE3D184K	.29	.42	.67	DE3E184K
.22	.17	.29	.42	DE3S224K	.23	.36	.55	DE3C224K	.23	.36	.55	DE3D224K	.29	.42	.67	DE3E224K
.25	.23	.36	.42	DE3S254K	.23	.36	.55	DE3C254K	.29	.42	.57	DE3D254K	.29	.42	.82	DE3E254K
.27	.23	.36	.42	DE3S274K	.23	.36	.55	DE3C274K	.29	.42	.57	DE3D274K	.29	.42	.82	DE3E274K
.33	.23	.36	.42	DE3S334K	.23	.36	.55	DE3C334K	.29	.42	.57	DE3D334K	.39	.54	.82	DE3E334K
.39	.23	.36	.42	DE3S394K	.23	.36	.55	DE3C394K	.29	.42	.67	DE3D394K	.39	.54	.82	DE3E394K
.47	.23	.36	.42	DE3S474K	.29	.42	.57	DE3C474K	.29	.42	.67	DE3D474K	.39	.54	.82	DE3E474K
.50	.17	.29	.55	DE3S504K	.29	.42	.57	DE3C504K	.29	.42	.67	DE3D504K	.39	.54	.82	DE3E504K
.56	.17	.29	.55	DE3S564K	.29	.42	.57	DE3C564K	.29	.42	.67	DE3D564K	.39	.54	1.04	DE3E564K
.68	.23	.36	.55	DE3S684K	.29	.42	.57	DE3C684K	.29	.42	.82	DE3D684K	.39	.54	1.04	DE3E684K
.75	.23	.36	.55	DE3S754K	.29	.42	.57	DE3C754K	.29	.42	.82	DE3D754K	.39	.54	1.04	DE3E754K
.82	.23	.36	.55	DE3S824K	.29	.42	.67	DE3C824K	.29	.42	.82	DE3D824K	.39	.54	1.19	DE3E824K
1.0	.23	.36	.55	DE3S105K	.29	.42	.67	DE3C105K	.39	.54	.82	DE3D105K	.39	.54	1.19	DE3E105K
1.2	.29	.42	.55	DE3S125K	.39	.54	.82	DE3C125K	.39	.54	.82	DE3D125K	.56	.72	1.75	DE3E125K
1.5	.29	.42	.55	DE3S155K	.39	.54	.82	DE3C155K	.39	.54	.82	DE3D155K	.56	.72	1.75	DE3E155K
1.8	.29	.42	.55	DE3S185K	.39	.54	.82	DE3C185K	.39	.54	1.04	DE3D185K	.56	.72	1.75	DE3E185K
2.0	.29	.42	.67	DE3S205K	.39	.54	.82	DE3C205K	.39	.54	1.04	DE3D205K	.56	.72	1.75	DE3E205K
3.0	.29	.42	.67	DE3S305K	.39	.54	1.04	DE3C305K	.56	.72	1.24	DE3D305K	.56	.72	1.75	DE3E305K
4.0	.39	.54	.82	DE3S405K	.56	.72	1.24	DE3C405K	.56	.72	1.24	DE3D405K	.76	.96	1.75	DE3E405K
5.0	.39	.54	.82	DE3S505K	.56	.72	1.24	DE3C505K	.56	.72	1.24	DE3D505K	.76	.96	1.75	DE3E505K
6.0	.39	.54	.82	DE3S605K	.56	.72	1.24	DE3C605K	.56	.72	1.75	DE3D605K	.76	.96	1.75	DE3E605K
8.0	.50	.68	1.04	DE3S805K	.56	.72	1.24	DE3C805K	.56	.72	1.75	DE3D805K	.97	1.21	1.75	DE3E805K
10.0	.50	.68	1.04	DE3S106K	.56	.72	1.24	DE3C106K	.56	.72	1.95	DE3D106K	.97	1.21	1.75	DE3E106K
12.0	.50	.68	1.24	DE3S126K	.56	.72	1.24	DE3C126K	.76	.96	2.10	DE3D126K	.97	1.21	2.25	DE3E126K
15.0	.50	.68	1.24	DE3S156K	.56	.72	1.75	DE3C156K	.76	.96	2.10	DE3D156K	.97	1.21	2.25	DE3E156K
20.0	.50	.68	1.24	DE3S206K	.76	.96	1.75	DE3C206K	.76	.96	2.10	DE3D206K	1.23	1.60	2.25	DE3E206K
30.0	.58	.79	1.24	DE3S306K	.76	.96	1.75	DE3C306K	.97	1.21	2.10	DE3D306K	1.59	1.81	2.25	DE3E306K
40.0	.76	.96	1.24	DE3S406K	.97	1.21	1.75	DE3C406K	1.23	1.60	2.10	DE3D406K	1.88	2.36	3.25	DE3E406K
50.0	.76	.96	1.40	DE3S506K	.97	1.21	1.75	DE3C506K	1.23	1.60	2.10	DE3D506K	1.88	2.36	3.25	DE3E506K
75.0	.76	.96	1.65	DE3S756K	1.23	1.60	1.75	DE3C756K	1.59	1.81	2.10	DE3D756K	1.88	2.36	3.25	DE3E756K
100.0	.76	.96	2.10	DE3S107K	1.23	1.60	1.75	DE3C107K	1.88	2.36	2.10	DE3D107K	2.18	2.27	3.25	DE3E107K

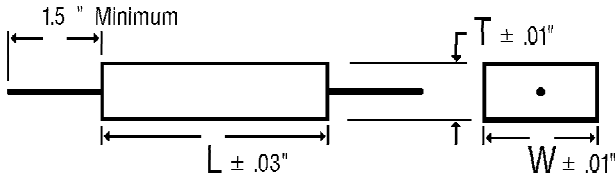
Note: Replace the last digit **K** with the desired tolerance code from the tolerance table. For an in-between value use the next larger value's dimensions. Custom sizes are readily available. All dimensions are in inches.

METALLIZED MYLAR EPOXY CASE, AXIAL LEAD, RECTANGULAR CAPACITORS



DE3
METALLIZED MYLAR
EPOXY CASE, AXIAL, RECT.
REGULAR SERIES

DIMENSIONS See tables for specific T, W, L values.



WIRE SIZE (Length 1.5" Minimum)

BODY LENGTH (L)	WIRE SIZE	
	AWG No.	Diameter
≤ 0.67"	24	0.020"
> 0.67" ≤ 1.06"	22	0.025"
> 1.06"	20	0.032"

SELECTION AND ORDERING TABLES Select voltage rating, capacitance and tolerance, read Part Number to the right.

MFD	400VDC 160VAC				600VDC 230VAC				1000VDC 360VAC				2000VDC 700VAC			
	RATING	T	W	L	PART #	T	W	L	PART #	T	W	L	PART #	T	W	L
	± .01"	± .01"	± .03"		± .01"	± .01"	± .03"		± .01"	± .01"	± .03"		± .01"	± .01"	± .03"	
.001	.17	.29	.42	DE3G102K	.17	.29	.42	DE3J102K	.29	.42	1.06	DE3M102K	.29	.42	1.06	DE3R102K
.0012	.17	.29	.42	DE3G122K	.17	.29	.42	DE3J122K	.29	.42	1.06	DE3M122K	.29	.42	1.06	DE3R122K
.0015	.17	.29	.42	DE3G152K	.17	.29	.42	DE3J152K	.29	.42	1.06	DE3M152K	.29	.42	1.06	DE3R152K
.0018	.17	.29	.42	DE3G182K	.17	.29	.42	DE3J182K	.29	.42	1.06	DE3M182K	.29	.42	1.06	DE3R182K
.0022	.17	.29	.42	DE3G222K	.17	.29	.42	DE3J222K	.29	.42	1.06	DE3M222K	.29	.42	1.06	DE3R222K
.0027	.17	.29	.42	DE3G272K	.17	.29	.42	DE3J272K	.29	.42	1.06	DE3M272K	.29	.42	1.06	DE3R272K
.0033	.17	.29	.42	DE3G332K	.17	.29	.42	DE3J332K	.29	.42	1.06	DE3M332K	.29	.42	1.06	DE3R332K
.0039	.17	.29	.42	DE3G392K	.17	.29	.42	DE3J392K	.29	.42	1.06	DE3M392K	.29	.42	1.06	DE3R392K
.0047	.17	.29	.42	DE3G472K	.17	.29	.42	DE3J472K	.29	.42	1.06	DE3M472K	.29	.42	1.06	DE3R472K
.0056	.17	.29	.42	DE3G562K	.17	.29	.42	DE3J562K	.29	.42	1.06	DE3M562K	.39	.54	1.06	DE3R562K
.0068	.17	.29	.42	DE3G682K	.17	.29	.42	DE3J682K	.29	.42	1.06	DE3M682K	.39	.54	1.06	DE3R682K
.0082	.17	.29	.42	DE3G822K	.17	.29	.42	DE3J822K	.29	.42	1.06	DE3M822K	.39	.54	1.06	DE3R822K
.01	.17	.29	.57	DE3G103K	.17	.29	.57	DE3J103K	.29	.42	1.06	DE3M103K	.39	.54	1.06	DE3R103K
.012	.17	.29	.57	DE3G123K	.23	.36	.55	DE3J123K	.29	.42	1.06	DE3M123K	.56	.72	1.06	DE3R123K
.015	.17	.29	.57	DE3G153K	.23	.36	.55	DE3J153K	.29	.42	1.06	DE3M153K	.56	.72	1.06	DE3R153K
.018	.17	.29	.57	DE3G183K	.23	.36	.55	DE3J183K	.29	.42	1.06	DE3M183K	.56	.72	1.06	DE3R183K
.022	.17	.29	.57	DE3G223K	.29	.42	.57	DE3J223K	.39	.54	1.06	DE3M223K	.56	.72	1.35	DE3R223K
.027	.23	.36	.55	DE3G273K	.29	.42	.57	DE3J273K	.39	.54	1.06	DE3M273K	.56	.72	1.35	DE3R273K
.033	.23	.36	.55	DE3G333K	.29	.42	.67	DE3J333K	.39	.54	1.06	DE3M333K	.56	.72	1.35	DE3R333K
.039	.23	.36	.55	DE3G393K	.29	.42	.67	DE3J393K	.39	.54	1.06	DE3M393K	.56	.72	1.35	DE3R393K
.047	.29	.42	.57	DE3G473K	.29	.42	.67	DE3J473K	.56	.72	1.06	DE3M473K	.76	.96	1.35	DE3R473K
.056	.29	.42	.57	DE3G563K	.29	.42	.82	DE3J563K	.56	.72	1.06	DE3M563K	.76	.96	1.35	DE3R563K
.068	.29	.42	.57	DE3G683K	.29	.42	.82	DE3J683K	.56	.72	1.06	DE3M683K	.76	.96	1.35	DE3R683K
.082	.29	.42	.67	DE3G823K	.39	.54	.82	DE3J823K	.56	.72	1.06	DE3M823K	.76	.96	1.75	DE3R823K
.10	.29	.42	.67	DE3G104K	.39	.54	.82	DE3J104K	.56	.72	1.35	DE3M104K	.76	.96	1.75	DE3R104K
.12	.29	.42	.82	DE3G124K	.39	.54	.82	DE3J124K	.56	.72	1.35	DE3M124K	.76	.96	1.75	DE3R124K
.15	.29	.42	.82	DE3G154K	.39	.54	1.04	DE3J154K	.56	.72	1.35	DE3M154K	.97	1.21	1.75	DE3R154K
.18	.39	.54	.82	DE3G184K	.39	.54	1.04	DE3J184K	.56	.72	1.35	DE3M184K	.97	1.21	1.75	DE3R184K
.22	.39	.54	.82	DE3G224K	.39	.54	1.19	DE3J224K	.76	.96	1.35	DE3M224K	.97	1.21	1.75	DE3R224K
.25	.39	.54	.82	DE3G254K	.56	.72	1.24	DE3J254K	.76	.96	1.35	DE3M254K	.97	1.21	1.75	DE3R254K
.27	.39	.54	.82	DE3G274K	.56	.72	1.24	DE3J274K	.76	.96	1.35	DE3M274K	1.23	1.60	1.75	DE3R274K
.33	.39	.54	1.19	DE3G334K	.56	.72	1.24	DE3J334K	.76	.96	1.75	DE3M334K	1.23	1.60	1.75	DE3R334K
.39	.39	.54	1.19	DE3G394K	.56	.72	1.24	DE3J394K	.76	.96	1.75	DE3M394K	.97	1.21	2.50	DE3R394K
.47	.39	.54	1.19	DE3G474K	.56	.72	1.24	DE3J474K	.76	.96	1.75	DE3M474K	.97	1.21	2.50	DE3R474K
.50	.39	.54	1.19	DE3G504K	.56	.72	1.24	DE3J504K	.76	.96	1.75	DE3M504K				
.56	.56	.72	1.24	DE3G564K	.56	.72	1.75	DE3J564K	.76	.96	1.75	DE3M564K				
.68	.56	.72	1.24	DE3G684K	.56	.72	1.75	DE3J684K	.97	1.21	1.75	DE3M684K				
.75	.56	.72	1.24	DE3G754K	.56	.72	1.75	DE3J754K	.97	1.21	1.75	DE3M754K				
.82	.56	.72	1.24	DE3G824K	.56	.72	1.75	DE3J824K	.97	1.21	1.75	DE3M824K				
1.0	.56	.72	1.24	DE3G105K	.76	.96	1.75	DE3J105K	.97	1.21	1.75	DE3M105K				
1.2	.56	.72	1.75	DE3G125K	.76	.96	1.75	DE3J125K	.97	1.21	2.50	DE3M125K				
1.5	.56	.72	1.75	DE3G155K	.76	.96	1.75	DE3J155K	.97	1.21	2.50	DE3M155K				
1.8	.76	.96	1.75	DE3G185K	.97	1.21	1.75	DE3J185K	.97	1.21	2.50	DE3M185K				
2.0	.76	.96	1.75	DE3G205K	.97	1.21	1.75	DE3J205K	1.23	1.60	2.50	DE3M205K				
3.0	.76	.96	1.75	DE3G305K	1.23	1.60	1.75	DE3J305K	1.23	1.60	2.50	DE3M305K				
4.0	.97	1.21	1.75	DE3G405K	1.23	1.60	2.25	DE3J405K	1.59	1.81	2.50	DE3M405K				
5.0	.97	1.21	1.75	DE3G505K	1.23	1.60	2.25	DE3J505K	1.88	2.36	2.50	DE3M505K				
6.0	.97	1.21	2.25	DE3G605K	1.23	1.60	2.25	DE3J605K	1.88	2.36	2.50	DE3M605K				
8.0	1.23	1.60	2.25	DE3G805K	1.59	1.81	2.25	DE3J805K	1.88	2.36	3.25	DE3M805K				
10.0	1.23	1.60	2.25	DE3G106K	1.59	1.81	2.25	DE3J106K	2.18	2.27	3.25	DE3M106K				
12.0	1.23	1.60	2.25	DE3G126K	1.88	2.36	2.25	DE3J126K								
15.0	1.59	1.81	2.25	DE3G156K	2.18	2.27	2.25	DE3J156K								

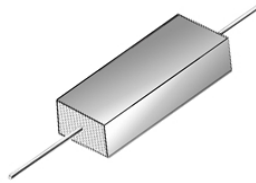
TOLERANCE TABLE

Code	Tolerance
A	± 0.1% ♦
B	± 0.25% ♦
D	± 0.5% ♦
F	± 1% ♦
G	± 2% ♦
H	± 3% ♦
J	± 5%
K	± 10%
M	± 20%
N	± 30%
P	GMV
S	-10% +30%
T	-10% +50%
V	-10% +20%
X	Special

♦ Temperature Stabilized

Note: Replace the last digit **K** with the desired tolerance code from the tolerance table. For an in-between value use the next larger value's dimensions. Custom sizes are readily available. All dimensions are in inches.

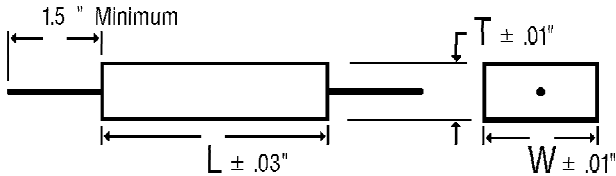
METALLIZED MYLAR EPOXY CASE, AXIAL LEAD, RECTANGULAR CAPACITORS



DE2
METALLIZED MYLAR
EPOXY CASE, AXIAL, RECT.
MINIATURE SERIES

DIMENSIONS See tables for specific T, W, L values.

WIRE SIZE (Length 1.5" Minimum)



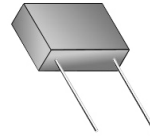
BODY LENGTH (L)	WIRE SIZE	
	AWG No.	Diameter
≤ 0.67"	24	0.020"
> 0.67" ≤ 1.06"	22	0.025"
> 1.06"	20	0.032"

SELECTION AND ORDERING TABLES Select voltage rating, capacitance and tolerance, read Part Number to the right.

MFD	100VDC 40VAC				200VDC 100VAC				400VDC 160VAC				600VDC 230VAC			
	RATING	T ± .01"	W ± .01"	L ± .03"	PART #	T ± .01"	W ± .01"	L ± .03"	PART #	T ± .01"	W ± .01"	L ± .03"	PART #	T ± .01"	W ± .01"	L ± .03"
.001	.17	.29	.42	DE2D102K	.17	.29	.42	DE2E102K	.17	.29	.42	DE2G102K	.17	.29	.42	DE2J102K
.0012	.17	.29	.42	DE2D122K	.17	.29	.42	DE2E122K	.17	.29	.42	DE2G122K	.17	.29	.42	DE2J122K
.0015	.17	.29	.42	DE2D152K	.17	.29	.42	DE2E152K	.17	.29	.42	DE2G152K	.17	.29	.42	DE2J152K
.0018	.17	.29	.42	DE2D182K	.17	.29	.42	DE2E182K	.17	.29	.42	DE2G182K	.17	.29	.42	DE2J182K
.0022	.17	.29	.42	DE2D222K	.17	.29	.42	DE2E222K	.17	.29	.42	DE2G222K	.17	.29	.42	DE2J222K
.0027	.17	.29	.42	DE2D272K	.17	.29	.42	DE2E272K	.17	.29	.42	DE2G272K	.17	.29	.42	DE2J272K
.0033	.17	.29	.42	DE2D332K	.17	.29	.42	DE2E332K	.17	.29	.42	DE2G332K	.17	.29	.55	DE2J332K
.0039	.17	.29	.42	DE2D392K	.17	.29	.42	DE2E392K	.17	.29	.42	DE2G392K	.17	.29	.55	DE2J392K
.0047	.17	.29	.42	DE2D472K	.17	.29	.42	DE2E472K	.17	.29	.42	DE2G472K	.17	.29	.55	DE2J472K
.0056	.17	.29	.42	DE2D562K	.17	.29	.42	DE2E562K	.17	.29	.42	DE2G562K	.17	.29	.55	DE2J562K
.0068	.17	.29	.42	DE2D682K	.17	.29	.42	DE2E682K	.17	.29	.42	DE2G682K	.17	.29	.55	DE2J682K
.0082	.17	.29	.42	DE2D822K	.17	.29	.42	DE2E822K	.17	.29	.55	DE2G822K	.23	.36	.55	DE2J822K
.01	.17	.29	.42	DE2D103K	.17	.29	.42	DE2E103K	.17	.29	.55	DE2G103K	.23	.36	.55	DE2J103K
.012	.17	.29	.42	DE2D123K	.17	.29	.42	DE2E123K	.17	.29	.55	DE2G123K	.23	.36	.55	DE2J123K
.015	.17	.29	.42	DE2D153K	.17	.29	.42	DE2E153K	.17	.29	.55	DE2G153K	.23	.42	.55	DE2J153K
.018	.17	.29	.42	DE2D183K	.17	.29	.42	DE2E183K	.17	.29	.55	DE2G183K	.29	.42	.55	DE2J183K
.022	.17	.29	.42	DE2D223K	.17	.29	.55	DE2E223K	.23	.36	.55	DE2G223K	.29	.42	.55	DE2J223K
.027	.17	.29	.42	DE2D273K	.17	.29	.55	DE2E273K	.23	.36	.55	DE2G273K	.29	.42	.67	DE2J273K
.033	.17	.29	.42	DE2D333K	.17	.29	.55	DE2E333K	.23	.36	.55	DE2G333K	.29	.42	.67	DE2J333K
.039	.17	.29	.42	DE2D393K	.17	.29	.55	DE2E393K	.29	.42	.55	DE2G393K	.29	.42	.82	DE2J393K
.047	.17	.29	.42	DE2D473K	.17	.29	.55	DE2E473K	.29	.42	.55	DE2G473K	.29	.42	.82	DE2J473K
.056	.17	.29	.42	DE2D563K	.17	.29	.55	DE2E563K	.29	.42	.55	DE2G563K	.39	.54	.82	DE2J563K
.068	.17	.29	.42	DE2D683K	.23	.36	.55	DE2E683K	.29	.42	.67	DE2G683K	.39	.54	.82	DE2J683K
.082	.17	.29	.42	DE2D823K	.23	.36	.55	DE2E823K	.29	.42	.67	DE2G823K	.39	.54	.82	DE2J823K
.10	.17	.29	.55	DE2D104K	.23	.36	.55	DE2E104K	.29	.42	.67	DE2G104K	.39	.54	1.04	DE2J104K
.12	.17	.29	.55	DE2D124K	.23	.36	.55	DE2E124K	.29	.42	.82	DE2G124K	.39	.54	1.24	DE2J124K
.15	.17	.29	.55	DE2D154K	.29	.42	.55	DE2E154K	.29	.42	.82	DE2G154K	.39	.54	1.24	DE2J154K
.18	.17	.29	.55	DE2D184K	.29	.42	.55	DE2E184K	.39	.54	.82	DE2G184K	.39	.54	1.24	DE2J184K
.22	.17	.29	.55	DE2D224K	.29	.42	.67	DE2E224K	.39	.54	.82	DE2G224K	.56	.72	1.24	DE2J224K
.27	.23	.36	.55	DE2D274K	.29	.42	.67	DE2E274K	.39	.54	.82	DE2G274K	.56	.72	1.24	DE2J274K
.33	.23	.36	.55	DE2D334K	.29	.42	.67	DE2E334K	.39	.54	1.04	DE2G334K	.56	.72	1.24	DE2J334K
.39	.23	.36	.55	DE2D394K	.29	.42	.82	DE2E394K	.39	.54	1.24	DE2G394K	.56	.72	1.50	DE2J394K
.47	.23	.36	.55	DE2D474K	.39	.54	.82	DE2E474K	.39	.54	1.24	DE2G474K	.56	.72	1.50	DE2J474K
.56	.29	.42	.55	DE2D564K	.39	.54	.82	DE2E564K	.39	.54	1.24	DE2G564K	.56	.72	1.75	DE2J564K
.68	.29	.42	.55	DE2D684K	.39	.54	.82	DE2E684K	.56	.72	1.24	DE2G684K	.56	.72	1.95	DE2J684K
.82	.29	.42	.67	DE2D824K	.39	.54	.82	DE2E824K	.56	.72	1.24	DE2G824K				
1.0	.29	.42	.67	DE2D105K	.39	.54	1.04	DE2E105K	.56	.72	1.24	DE2G105K				
1.2	.29	.42	.67	DE2D125K	.39	.54	1.24	DE2E125K	.56	.72	1.50	DE2G125K				
1.5	.29	.42	.82	DE2D155K	.39	.54	1.24	DE2E155K	.56	.72	1.50	DE2G155K				
1.8	.29	.42	.82	DE2D185K	.39	.54	1.24	DE2E185K	.56	.72	1.75	DE2G185K				
2.0	.39	.54	.82	DE2D205K	.56	.72	1.24	DE2E205K	.56	.72	1.95	DE2G205K				
3.0	.39	.54	.82	DE2D305K	.56	.72	1.24	DE2E305K								
4.0	.39	.54	1.04	DE2D405K	.56	.72	1.50	DE2E405K								
5.0	.39	.54	1.24	DE2D505K	.56	.72	1.75	DE2E505K								
6.0	.39	.54	1.24	DE2D605K												
8.0	.56	.72	1.24	DE2D805K												
10.0	.56	.72	1.24	DE2D106K												
12.0	.56	.72	1.50	DE2D126K												
15.0	.56	.72	1.50	DE2D156K												

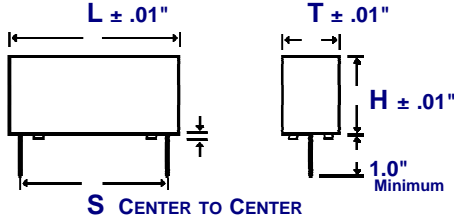
Note: Replace the last digit **K** with the desired tolerance code from the tolerance table. For an in-between value use the next larger value's dimensions. Custom sizes are readily available. All dimensions are in inches.

METALLIZED MYLAR EPOXY CASE, RADIAL LEAD, RECTANGULAR CAPACITORS



DF2
METALLIZED MYLAR
EPOXY CASE, RADIAL, RECT.
MINIATURE SERIES

DIMENSIONS See tables for specific T, H, L, S values.



** The mounting pads consist of two individual pads on each end or one continuous pad on each end, depending on the mold. (not an option).

WIRE SIZE (Length 1.0" Minimum)

BODY LENGTH (L)	LEAD SPACING (S) (C to C ± .01")	WIRE SIZE	
		AWG No.	Diameter
.42"	.300"	22	0.025"
.55"	.400"	22	0.025"
.67"	.500"	22	0.025"
.82"	.600"	22	0.025"
1.04"	.800"	22	0.025"
1.24"	1.100"	20	0.032"
1.75"	1.600"	20	0.032"

SELECTION AND ORDERING TABLES Select voltage rating, capacitance and tolerance, read Part Number to the right.

MFD	100VDC 40VAC				200VDC 100VAC				400VDC 160VAC				600VDC 230VAC				
	RATING	T	H	L	PART #	T	H	L	PART #	T	H	L	PART #	T	H	L	PART #
	± .01"	± .01"	± .01"		± .01"	± .01"	± .01"		± .01"	± .01"	± .01"		± .01"	± .01"	± .01"		± .01"
.001	.18	.30	.42	DF2D102K	.18	.30	.42	DF2E102K	.18	.30	.42	DF2G102K	.18	.30	.42	DF2J102K	
.0012	.18	.30	.42	DF2D122K	.18	.30	.42	DF2E122K	.18	.30	.42	DF2G122K	.18	.30	.42	DF2J122K	
.0015	.18	.30	.42	DF2D152K	.18	.30	.42	DF2E152K	.18	.30	.42	DF2G152K	.18	.30	.42	DF2J152K	
.0018	.18	.30	.42	DF2D182K	.18	.30	.42	DF2E182K	.18	.30	.42	DF2G182K	.18	.30	.42	DF2J182K	
.0022	.18	.30	.42	DF2D222K	.18	.30	.42	DF2E222K	.18	.30	.42	DF2G222K	.18	.30	.42	DF2J222K	
.0027	.18	.30	.42	DF2D272K	.18	.30	.42	DF2E272K	.18	.30	.42	DF2G272K	.18	.30	.42	DF2J272K	
.0033	.18	.30	.42	DF2D332K	.18	.30	.42	DF2E332K	.18	.30	.42	DF2G332K	.18	.30	.42	DF2J332K	
.0039	.18	.30	.42	DF2D392K	.18	.30	.42	DF2E392K	.18	.30	.42	DF2G392K	.18	.30	.42	DF2J392K	
.0047	.18	.30	.42	DF2D472K	.18	.30	.42	DF2E472K	.18	.30	.42	DF2G472K	.18	.30	.42	DF2J472K	
.0056	.18	.30	.42	DF2D562K	.18	.30	.42	DF2E562K	.18	.30	.42	DF2G562K	.18	.30	.55	DF2J562K	
.0068	.18	.30	.42	DF2D682K	.18	.30	.42	DF2E682K	.18	.30	.42	DF2G682K	.18	.30	.55	DF2J682K	
.0082	.18	.30	.42	DF2D822K	.18	.30	.42	DF2E822K	.18	.30	.55	DF2G822K	.18	.30	.55	DF2J822K	
.01	.18	.30	.42	DF2D103K	.18	.30	.42	DF2E103K	.18	.30	.55	DF2G103K	.24	.37	.55	DF2J103K	
.012	.18	.30	.42	DF2D123K	.18	.30	.42	DF2E123K	.18	.30	.55	DF2G123K	.24	.37	.55	DF2J123K	
.015	.18	.30	.42	DF2D153K	.18	.30	.42	DF2E153K	.18	.30	.55	DF2G153K	.24	.37	.55	DF2J153K	
.018	.18	.30	.42	DF2D183K	.18	.30	.42	DF2E183K	.18	.30	.55	DF2G183K	.30	.43	.55	DF2J183K	
.022	.18	.30	.42	DF2D223K	.18	.30	.55	DF2E223K	.18	.30	.55	DF2G223K	.30	.43	.55	DF2J223K	
.027	.18	.30	.42	DF2D273K	.18	.30	.55	DF2E273K	.24	.37	.55	DF2G273K	.30	.43	.67	DF2J273K	
.033	.18	.30	.42	DF2D333K	.18	.30	.55	DF2E333K	.24	.37	.55	DF2G333K	.30	.43	.67	DF2J333K	
.039	.18	.30	.42	DF2D393K	.18	.30	.55	DF2E393K	.24	.37	.55	DF2G393K	.30	.43	.82	DF2J393K	
.047	.18	.30	.42	DF2D473K	.18	.30	.55	DF2E473K	.30	.43	.55	DF2G473K	.30	.43	.82	DF2J473K	
.056	.18	.30	.42	DF2D563K	.18	.30	.55	DF2E563K	.30	.43	.55	DF2G563K	.40	.55	.82	DF2J563K	
.068	.18	.30	.42	DF2D683K	.18	.30	.55	DF2E683K	.30	.43	.67	DF2G683K	.40	.55	.82	DF2J683K	
.082	.18	.30	.42	DF2D823K	.24	.37	.55	DF2E823K	.30	.43	.67	DF2G823K	.40	.55	.82	DF2J823K	
.10	.18	.30	.55	DF2D104K	.24	.37	.55	DF2E104K	.30	.43	.67	DF2G104K	.40	.55	1.04	DF2J104K	
.12	.18	.30	.55	DF2D124K	.24	.37	.55	DF2E124K	.30	.43	.82	DF2G124K	.40	.55	1.24	DF2J124K	
.15	.18	.30	.55	DF2D154K	.30	.43	.55	DF2E154K	.30	.43	.82	DF2G154K	.40	.55	1.24	DF2J154K	
.18	.18	.30	.55	DF2D184K	.30	.43	.55	DF2E184K	.40	.55	.82	DF2G184K	.40	.55	1.24	DF2J184K	
.22	.18	.30	.55	DF2D224K	.30	.43	.67	DF2E224K	.40	.55	.82	DF2G224K	.57	.73	1.24	DF2J224K	
.27	.18	.30	.55	DF2D274K	.30	.43	.67	DF2E274K	.40	.55	.82	DF2G274K	.57	.73	1.24	DF2J274K	
.33	.24	.37	.55	DF2D334K	.30	.43	.67	DF2E334K	.40	.55	1.04	DF2G334K	.57	.73	1.24	DF2J334K	
.39	.24	.37	.55	DF2D394K	.30	.43	.82	DF2E394K	.40	.55	1.24	DF2G394K	.57	.73	1.75	DF2J394K	
.47	.24	.37	.55	DF2D474K	.30	.43	.82	DF2E474K	.40	.55	1.24	DF2G474K	.57	.73	1.75	DF2J474K	
.56	.30	.43	.55	DF2D564K	.40	.55	.82	DF2E564K	.40	.55	1.24	DF2G564K	.57	.73	1.75	DF2J564K	
.68	.30	.43	.55	DF2D684K	.40	.55	.82	DF2E684K	.57	.73	1.24	DF2G684K					
.82	.30	.43	.67	DF2D824K	.40	.55	.82	DF2E824K	.57	.73	1.24	DF2G824K					
1.0	.30	.43	.67	DF2D105K	.40	.55	1.04	DF2E105K	.57	.73	1.24	DF2G105K					
1.2	.30	.43	.67	DF2D125K	.40	.55	1.24	DF2E125K	.57	.73	1.75	DF2G125K					
1.5	.30	.43	.82	DF2D155K	.40	.55	1.24	DF2E155K	.57	.73	1.75	DF2G155K					
1.8	.30	.43	.82	DF2D185K	.40	.55	1.24	DF2E185K	.57	.73	1.75	DF2G185K					
2.0	.40	.55	.82	DF2D205K	.57	.73	1.24	DF2E205K									
3.0	.40	.55	.82	DF2D305K	.57	.73	1.24	DF2E305K									
4.0	.40	.55	1.04	DF2D405K	.57	.73	1.75	DF2E405K									
5.0	.40	.55	1.24	DF2D505K	.57	.73	1.75	DF2E505K									
6.0	.40	.55	1.24	DF2D605K													
8.0	.57	.73	1.24	DF2D805K													
10.0	.57	.73	1.24	DF2D106K													
12.0	.57	.73	1.24	DF2D126K													
15.0	.57	.73	1.75	DF2D156K													

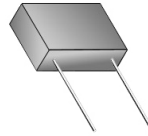
TOLERANCE TABLE

Code	Tolerance
A	± 0.1% ♦
B	± 0.25% ♦
D	± 0.5% ♦
F	± 1% ♦
G	± 2% ♦
H	± 3% ♦
J	± 5%
K	± 10%
M	± 20%
N	± 30%
P	GMV
S	-10% +30%
T	-10% +50%
V	-10% +20%
X	Special

♦ Temperature Stabilized

Note: Replace the last digit **K** with the desired tolerance code from the tolerance table. For an in-between value use the next larger value's dimensions. Custom sizes are readily available. All dimensions are in inches.

METALLIZED MYLAR EPOXY CASE, RADIAL LEAD, RECTANGULAR CAPACITORS



DF3
METALLIZED MYLAR
EPOXY CASE, RADIAL, RECT.
REGULAR SERIES

ORDERING DESCRIPTION

Capacitor, fixed: Metallized Mylar dielectric; extended foil construction; tin-plated copper-clad steel wire axial leads; encased in a molded epoxy/plastic shell with epoxy fill.

APPLICATION NOTES

Epoxy Case capacitors are not intended for exposure to high humidity conditions over extended periods of time. For stringent environmental conditions, Epoxy Case capacitors should be used in encapsulated or hermetically sealed circuitry.

SELECTION AND ORDERING TABLES Select voltage rating, capacitance and tolerance, read Part Number to the right.

MFD	35VDC 20VAC				50VDC 40VAC				100VDC 70VAC				200VDC 120VAC				
	RATING	T	H	L	PART #	T	H	L	PART #	T	H	L	PART #	T	H	L	PART #
	± .01"	± .01"	± .01"		± .01"	± .01"	± .01"		± .01"	± .01"	± .01"		± .01"	± .01"	± .01"		± .01"
.001	.18	.30	.42	DF3S102K	.18	.30	.42	DF3C102K	.18	.30	.42	DF3D102K	.18	.30	.42	DF3E102K	
.0012	.18	.30	.42	DF3S122K	.18	.30	.42	DF3C122K	.18	.30	.42	DF3D122K	.18	.30	.42	DF3E122K	
.0018	.18	.30	.42	DF3S182K	.18	.30	.42	DF3C182K	.18	.30	.42	DF3D182K	.18	.30	.42	DF3E182K	
.0022	.18	.30	.42	DF3S222K	.18	.30	.42	DF3C222K	.18	.30	.42	DF3D222K	.18	.30	.42	DF3E222K	
.0027	.18	.30	.42	DF3S272K	.18	.30	.42	DF3C272K	.18	.30	.42	DF3D272K	.18	.30	.42	DF3E272K	
.0033	.18	.30	.42	DF3S332K	.18	.30	.42	DF3C332K	.18	.30	.42	DF3D332K	.18	.30	.42	DF3E332K	
.0047	.18	.30	.42	DF3S472K	.18	.30	.42	DF3C472K	.18	.30	.42	DF3D472K	.18	.30	.42	DF3E472K	
.0056	.18	.30	.42	DF3S562K	.18	.30	.42	DF3C562K	.18	.30	.42	DF3D562K	.18	.30	.42	DF3E562K	
.0068	.18	.30	.42	DF3S682K	.18	.30	.42	DF3C682K	.18	.30	.42	DF3D682K	.18	.30	.42	DF3E682K	
.0082	.18	.30	.42	DF3S822K	.18	.30	.42	DF3C822K	.18	.30	.42	DF3D822K	.18	.30	.42	DF3E822K	
.01	.18	.30	.42	DF3S103K	.18	.30	.42	DF3C103K	.18	.30	.42	DF3D103K	.18	.30	.42	DF3E103K	
.012	.18	.30	.42	DF3S123K	.18	.30	.42	DF3C123K	.18	.30	.42	DF3D123K	.18	.30	.42	DF3E123K	
.015	.18	.30	.42	DF3S153K	.18	.30	.42	DF3C153K	.18	.30	.42	DF3D153K	.18	.30	.42	DF3E153K	
.018	.18	.30	.42	DF3S183K	.18	.30	.42	DF3C183K	.18	.30	.42	DF3D183K	.18	.30	.42	DF3E183K	
.022	.18	.30	.42	DF3S223K	.18	.30	.42	DF3C223K	.18	.30	.42	DF3D223K	.18	.30	.42	DF3E223K	
.027	.18	.30	.42	DF3S273K	.18	.30	.42	DF3C273K	.18	.30	.42	DF3D273K	.18	.30	.55	DF3E273K	
.033	.18	.30	.42	DF3S333K	.18	.30	.42	DF3C333K	.18	.30	.42	DF3D333K	.18	.30	.55	DF3E333K	
.039	.18	.30	.42	DF3S393K	.18	.30	.42	DF3C393K	.18	.30	.42	DF3D393K	.18	.30	.55	DF3E393K	
.047	.18	.30	.42	DF3S473K	.18	.30	.42	DF3C473K	.18	.30	.42	DF3D473K	.24	.37	.55	DF3E473K	
.056	.18	.30	.42	DF3S563K	.18	.30	.42	DF3C563K	.18	.30	.55	DF3D563K	.24	.37	.55	DF3E563K	
.068	.18	.30	.42	DF3S683K	.18	.30	.42	DF3C683K	.18	.30	.55	DF3D683K	.24	.37	.55	DF3E683K	
.082	.18	.30	.42	DF3S823K	.18	.30	.42	DF3C823K	.18	.30	.55	DF3D823K	.24	.37	.55	DF3E823K	
.10	.18	.30	.42	DF3S104K	.18	.30	.42	DF3C104K	.18	.30	.55	DF3D104K	.30	.43	.55	DF3E104K	
.12	.18	.30	.42	DF3S124K	.18	.30	.42	DF3C124K	.18	.30	.55	DF3D124K	.30	.43	.55	DF3E124K	
.15	.18	.30	.42	DF3S154K	.18	.30	.55	DF3C154K	.24	.37	.55	DF3D154K	.30	.43	.67	DF3E154K	
.18	.18	.30	.42	DF3S184K	.18	.30	.55	DF3C184K	.24	.37	.55	DF3D184K	.30	.43	.67	DF3E184K	
.22	.18	.30	.42	DF3S224K	.24	.37	.55	DF3C224K	.24	.37	.55	DF3D224K	.30	.43	.67	DF3E224K	
.25	.18	.30	.42	DF3S254K	.24	.37	.55	DF3C254K	.30	.43	.55	DF3D254K	.30	.43	.82	DF3E254K	
.27	.18	.30	.42	DF3S274K	.24	.37	.55	DF3C274K	.30	.43	.55	DF3D274K	.30	.43	.82	DF3E274K	
.33	.18	.30	.42	DF3S334K	.24	.37	.55	DF3C334K	.30	.43	.55	DF3D334K	.40	.55	.82	DF3E334K	
.39	.18	.30	.55	DF3S394K	.24	.37	.55	DF3C394K	.30	.43	.67	DF3D394K	.40	.55	.82	DF3E394K	
.47	.18	.30	.55	DF3S474K	.24	.43	.55	DF3C474K	.30	.43	.67	DF3D474K	.40	.55	.82	DF3E474K	
.50	.18	.30	.55	DF3S504K	.30	.43	.55	DF3C504K	.30	.43	.67	DF3D504K	.40	.55	.82	DF3E504K	
.56	.18	.30	.55	DF3S564K	.30	.43	.55	DF3C564K	.30	.43	.67	DF3D564K	.40	.55	1.04	DF3E564K	
.68	.24	.37	.55	DF3S684K	.30	.43	.55	DF3C684K	.30	.43	.82	DF3D684K	.40	.55	1.04	DF3E684K	
.75	.24	.37	.55	DF3S754K	.30	.43	.55	DF3C754K	.30	.43	.82	DF3D754K	.40	.55	1.04	DF3E754K	
.82	.24	.37	.55	DF3S824K	.30	.43	.67	DF3C824K	.30	.43	.82	DF3D824K	.40	.55	1.24	DF3E824K	
1.0	.24	.37	.55	DF3S105K	.30	.43	.67	DF3C105K	.40	.55	.82	DF3D105K	.40	.55	1.24	DF3E105K	
1.2	.24	.37	.55	DF3S125K	.40	.55	.82	DF3C125K	.40	.55	.82	DF3D125K	.57	.73	1.75	DF3E125K	
1.5	.30	.43	.55	DF3S155K	.40	.55	.82	DF3C155K	.40	.55	.82	DF3D155K	.57	.73	1.75	DF3E155K	
1.8	.30	.43	.55	DF3S185K	.40	.55	.82	DF3C185K	.40	.55	1.04	DF3D185K	.57	.73	1.75	DF3E185K	
2.0	.30	.43	.55	DF3S205K	.40	.55	.82	DF3C205K	.40	.55	1.04	DF3D205K	.57	.73	1.75	DF3E205K	
3.0	.30	.43	.67	DF3S305K	.40	.55	1.04	DF3C305K	.57	.73	1.24	DF3D305K	.57	.73	1.75	DF3E305K	
4.0	.30	.43	.82	DF3S405K	.57	.73	1.24	DF3C405K	.57	.73	1.24	DF3D405K	.70	1.13	1.75	DF3E405K	
5.0	.40	.55	.82	DF3S505K	.57	.73	1.24	DF3C505K	.57	.73	1.24	DF3D505K	.70	1.13	1.75	DF3E505K	
6.0	.40	.55	.82	DF3S605K	.57	.73	1.24	DF3C605K	.57	.73	1.75	DF3D605K	.80	1.13	1.75	DF3E605K	
8.0	.40	.55	1.04	DF3S805K	.57	.73	1.24	DF3C805K	.57	.73	1.75	DF3D805K	.80	1.13	1.75	DF3E805K	
10.0	.40	.55	1.04	DF3S106K	.57	.73	1.24	DF3C106K	.70	1.13	1.75	DF3D106K	1.27	1.40	1.77	DF3E106K	
12.0	.57	.73	1.24	DF3S126K	.57	.73	1.24	DF3C126K	.70	1.13	1.75	DF3D126K	1.27	1.40	1.77	DF3E126K	
15.0	.57	.73	1.24	DF3S156K	.57	.73	1.75	DF3C156K	.70	1.13	1.75	DF3D156K	1.27	1.40	1.77	DF3E156K	
18.0	.57	.73	1.24	DF3S186K	.70	1.13	1.75	DF3C186K	.80	1.13	1.75	DF3D186K					
20.0	.57	.73	1.24	DF3S206K	.70	1.13	1.75	DF3C206K	.80	1.13	1.75	DF3D206K					

Note: Replace the last digit **K** with the desired tolerance code from the tolerance table. For an in-between value use the next larger value's dimensions. Custom sizes are readily available. All dimensions are in inches.

METALLIZED MYLAR CAPACITORS FEED THROUGH, ROUND SKIN TIGHT PLASTIC WRAP, WITH SOLDERABLE ENDS



DQ3
METALLIZED MYLAR
FEED THROUGH, ROUND
REGULAR SERIES

ORDERING DESCRIPTION

Capacitor, fixed: Metallized Mylar dielectric; extended foil construction; Feed Through; encased in skin-tight plastic wrap, with solderable ends. Capacitors are wound on hollow cores for wire or stud insertion through the center axis of the capacitor. In addition to the standard Tape, New Flame Retardant Tape is available meeting UL 510 Flame Retardant Specifications.

APPLICATION NOTES

These tables are intended to give the engineer a starting point for ordering custom sizes and values. Standard core sizes are .120, .250, .375, .500, .625, .750" and 1.000" I.D., other core sizes are available. Custom configurations are the norm for feed through capacitors. Please do not hesitate to specify your unique requirements, specify capacitance, tolerance, voltage, maximum length, maximum diameter, minimum I.D. of core, core material and core extension. For UL 510 Flame Retardant Tape add -R to the end of the Part Number.

SELECTION AND ORDERING TABLES Select voltage rating, capacitance and tolerance, read Part Number to the right.

MFD	100VDC 70VAC				200VDC 120VAC				400VDC 160VAC				600VDC 230VAC			
	I	D	L	PART #	I	D	L	PART #	I	D	L	PART #	I	D	L	PART #
RATING	± .05"	+ .05"	± .07"		± .05"	+ .05"	± .07"		± .05"	+ .05"	± .07"		± .05"	+ .05"	± .07"	
Teflon Tube Core .120" I.D. x .130" O.D. CORE CODE 1																
.01	.12	.45	.32	DQ31D103K	.12	.45	.32	DQ31E103K	.12	.45	.32	DQ31G103K	.12	.45	.32	DQ31J103K
.015	.12	.45	.32	DQ31D153K	.12	.45	.32	DQ31E153K	.12	.45	.32	DQ31G153K	.12	.45	.32	DQ31J153K
.027	.12	.45	.32	DQ31D273K	.12	.45	.32	DQ31E273K	.12	.45	.32	DQ31G273K	.12	.45	.32	DQ31J273K
.033	.12	.45	.32	DQ31D333K	.12	.45	.32	DQ31E333K	.12	.45	.32	DQ31G333K	.12	.45	.32	DQ31J333K
.047	.12	.45	.32	DQ31D473K	.12	.45	.32	DQ31E473K	.12	.45	.32	DQ31G473K	.12	.53	.32	DQ31J473K
.056	.12	.45	.32	DQ31D563K	.12	.45	.32	DQ31E563K	.12	.45	.32	DQ31G563K	.12	.56	.32	DQ31J563K
.068	.12	.45	.32	DQ31D683K	.12	.45	.32	DQ31E683K	.12	.45	.32	DQ31G683K	.12	.62	.32	DQ31J683K
.082	.12	.45	.32	DQ31D823K	.12	.45	.32	DQ31E823K	.12	.47	.32	DQ31G823K	.12	.48	.45	DQ31J823K
.10	.12	.45	.32	DQ31D104K	.12	.45	.32	DQ31E104K	.12	.51	.32	DQ31G104K	.12	.53	.45	DQ31J104K
.15	.12	.45	.32	DQ31D154K	.12	.47	.32	DQ31E154K	.12	.61	.32	DQ31G154K	.12	.63	.45	DQ31J154K
.22	.12	.45	.32	DQ31D224K	.12	.56	.32	DQ31E224K	.12	.52	.45	DQ31G224K	.12	.75	.45	DQ31J224K
.27	.12	.45	.32	DQ31D274K	.12	.62	.32	DQ31E274K	.12	.56	.45	DQ31G274K	.12	.83	.45	DQ31J274K
.33	.12	.45	.32	DQ31D334K	.12	.48	.45	DQ31E334K	.12	.62	.45	DQ31G334K	.12	.75	.57	DQ31J334K
.47	.12	.48	.32	DQ31D474K	.12	.56	.45	DQ31E474K	.12	.74	.45	DQ31G474K	.12	.89	.57	DQ31J474K
.56	.12	.53	.32	DQ31D564K	.12	.61	.45	DQ31E564K	.12	.79	.45	DQ31G564K	.12	.95	.57	DQ31J564K
.68	.12	.58	.32	DQ31D684K	.12	.67	.45	DQ31E684K	.12	.71	.57	DQ31G684K	.12	1.06	.57	DQ31J684K
.82	.12	.63	.32	DQ31D824K	.12	.72	.45	DQ31E824K	.12	.78	.57	DQ31G824K	.12	1.00	.70	DQ31J824K
1.0	.12	.48	.45	DQ31D105K	.12	.81	.45	DQ31E105K	.12	.86	.57	DQ31G105K	.12	1.10	.70	DQ31J105K
1.5	.12	.59	.45	DQ31D155K	.12	.79	.57	DQ31E155K	.12	1.05	.57	DQ31G155K	.12	1.19	.82	DQ31J155K
2.0	.12	.67	.45	DQ31D205K	.12	.91	.57	DQ31E205K	.12	1.04	.70	DQ31G205K	.12	1.35	.82	DQ31J205K
Paper Tube Core .250" I.D. x .315" O.D. CORE CODE 2																
.10	.25	.62	.32	DQ32D104K	.25	.62	.32	DQ32E104K	.25	.62	.32	DQ32G104K	.25	.81	.32	DQ32J104K
.12	.25	.62	.32	DQ32D124K	.25	.62	.32	DQ32E124K	.25	.63	.32	DQ32G124K	.25	.86	.32	DQ32J124K
.15	.25	.62	.32	DQ32D154K	.25	.62	.32	DQ32E154K	.25	.69	.32	DQ32G154K	.25	.96	.32	DQ32J154K
.18	.25	.62	.32	DQ32D184K	.25	.62	.32	DQ32E184K	.25	.74	.32	DQ32G184K	.25	.75	.45	DQ32J184K
.22	.25	.62	.32	DQ32D224K	.25	.64	.32	DQ32E224K	.25	.79	.32	DQ32G224K	.25	.82	.45	DQ32J224K
.27	.25	.62	.32	DQ32D274K	.25	.69	.32	DQ32E274K	.25	.86	.32	DQ32G274K	.25	.89	.45	DQ32J274K
.33	.25	.63	.32	DQ32D334K	.25	.75	.32	DQ32E334K	.25	.94	.32	DQ32G334K	.25	.97	.45	DQ32J334K
.47	.25	.64	.32	DQ32D474K	.25	.86	.32	DQ32E474K	.25	.81	.45	DQ32G474K	.25	.93	.57	DQ32J474K
.56	.25	.65	.32	DQ32D564K	.25	.92	.32	DQ32E564K	.25	.86	.45	DQ32G564K	.25	1.01	.57	DQ32J564K
.68	.25	.66	.32	DQ32D684K	.25	.74	.45	DQ32E684K	.25	.93	.45	DQ32G684K	.25	1.10	.57	DQ32J684K
.82	.25	.70	.32	DQ32D824K	.25	.79	.45	DQ32E824K	.25	1.01	.45	DQ32G824K	.25	1.19	.57	DQ32J824K
1.0	.25	.76	.32	DQ32D105K	.25	.86	.45	DQ32E105K	.25	.91	.57	DQ32G105K	.25	1.14	.70	DQ32J105K
1.2	.25	.82	.32	DQ32D125K	.25	.93	.45	DQ32E125K	.25	.99	.57	DQ32G125K	.25	1.23	.70	DQ32J125K
1.5	.25	.89	.32	DQ32D155K	.25	1.02	.45	DQ32E155K	.25	1.09	.57	DQ32G155K	.25	1.35	.70	DQ32J155K
2.0	.25	.74	.45	DQ32D205K	.25	.97	.57	DQ32E205K	.25	1.23	.57	DQ32G205K	.25	1.38	.82	DQ32J205K
3.0	.25	.86	.45	DQ32D305K	.25	1.15	.57	DQ32E305K	.25	1.29	.70	DQ32G305K	.25	1.64	.82	DQ32J305K
Phenolic Tube Core .500" I.D. x .625" O.D. CORE CODE 5																
1.0	.50	1.06	.32	DQ35D105K	.50	1.35	.32	DQ35E105K	.50	1.25	.45	DQ35G105K	.50	1.41	.57	DQ35J105K
1.2	.50	1.06	.32	DQ35D125K	.50	1.44	.32	DQ35E125K	.50	1.32	.45	DQ35G125K	.50	1.50	.57	DQ35J125K
1.5	.50	1.08	.32	DQ35D155K	.50	1.19	.45	DQ35E155K	.50	1.24	.57	DQ35G155K	.50	1.46	.70	DQ35J155K
2.0	.50	1.18	.32	DQ35D205K	.50	1.29	.45	DQ35E205K	.50	1.36	.57	DQ35G205K	.50	1.63	.70	DQ35J205K
3.0	.50	1.07	.45	DQ35D305K	.50	1.29	.57	DQ35E305K	.50	1.56	.57	DQ35G305K	.50	1.74	.82	DQ35J305K
4.0	.50	1.16	.45	DQ35D405K	.50	1.41	.57	DQ35E405K	.50	1.56	.70	DQ35G405K	.50	1.95	.82	DQ35J405K
5.0	.50	1.23	.45	DQ35D505K	.50	1.53	.57	DQ35E505K	.50	1.69	.70	DQ35G505K	.50	1.86	1.07	DQ35J505K
6.0	.50	1.30	.45	DQ35D605K	.50	1.47	.70	DQ35E605K	.50	1.66	.82	DQ35G605K	.50	2.00	1.07	DQ35J605K
8.0	.50	1.25	.57	DQ35D805K	.50	1.63	.70	DQ35E805K	.50	1.86	.82	DQ35G805K	.50	2.25	1.07	DQ35J805K
10.0	.50	1.34	.57	DQ35D106K	.50	1.77	.82	DQ35E106K	.50	1.77	1.07	DQ35G106K	.50	2.04	1.57	DQ35J106K

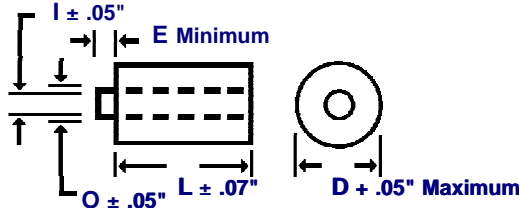
Note: Replace the last digit **K** with the desired tolerance code from the tolerance table. For an in-between value use the next larger value's dimensions. Custom sizes are readily available. All dimensions are in inches. All +.05" dimension tolerances are Maximum.

METALLIZED MYLAR CAPACITORS FEED THROUGH, ROUND SKIN TIGHT PLASTIC WRAP, WITH SOLDERABLE ENDS



DQ3
METALLIZED MYLAR
FEED THROUGH, ROUND
REGULAR SERIES

DIMENSIONS See tables for specific I, O, E, D, L values.



CORE INFORMATION

CORE TYPE	P/N CODE	CORE (E) EXTENSION	CORE SIZE	
			I. D. (I)	O. D. (O)
Teflon Tube	1	.125" Minimum	.120"	0.130"
Kraft Paper	2	.187" Minimum	.250"	0.315"
Kraft Paper	3	.187" Minimum	.375"	0.440"
Phenolic Tube	4	.187" Minimum	.375"	0.500"
Phenolic Tube	5	.187" Minimum	.500"	0.625"
Phenolic Tube	6	.187" Minimum	.625"	0.750"
Phenolic Tube	7	.187" Minimum	.750"	1.062"

SELECTION AND ORDERING TABLES Select voltage rating, capacitance and tolerance, read Part Number to the right.

MFD	800VDC 300VAC				1000VDC 360VAC				2000VDC 700VAC			
	I	D	L	PART #	I	D	L	PART #	I	D	L	PART #
RATING	± .05"	+ .05"	± .07"		± .05"	+ .05"	± .07"		± .05"	+ .05"	± .07"	
Teflon Tube Core .120" I.D. x .130" O.D. CORE CODE 1												
.01	.12	.45	.57	DQ31L103K	.12	.43	.82	DQ31M103K	.12	.43	.82	DQ31R103K
.015	.12	.45	.57	DQ31L153K	.12	.46	.82	DQ31M153K	.12	.52	.82	DQ31R153K
.027	.12	.45	.57	DQ31L273K	.12	.46	.82	DQ31M273K	.12	.67	.82	DQ31R273K
.033	.12	.45	.57	DQ31L333K	.12	.46	.82	DQ31M333K	.12	.74	.82	DQ31R333K
.047	.12	.49	.57	DQ31L473K	.12	.46	.82	DQ31M473K	.12	.87	.82	DQ31R473K
.056	.12	.54	.57	DQ31L563K	.12	.49	.82	DQ31M563K	.12	.94	.82	DQ31R563K
.068	.12	.59	.57	DQ31L683K	.12	.54	.82	DQ31M683K	.12	1.05	.82	DQ31R683K
.082	.12	.64	.57	DQ31L823K	.12	.59	.82	DQ31M823K	.12	1.14	.82	DQ31R823K
.10	.12	.70	.57	DQ31L104K	.12	.64	.82	DQ31M104K	.12	1.24	.82	DQ31R104K
.15	.12	.85	.57	DQ31L154K	.12	.78	.82	DQ31M154K	.12	1.06	1.20	DQ31R154K
.22	.12	.71	.82	DQ31L224K	.12	.94	.82	DQ31M224K	.12	1.26	1.20	DQ31R224K
.27	.12	.78	.82	DQ31L274K	.12	1.04	.82	DQ31M274K	.12	1.38	1.20	DQ31R274K
.33	.12	.86	.82	DQ31L334K	.12	1.15	.82	DQ31M334K	.12	1.51	1.20	DQ31R334K
.47	.12	1.02	.82	DQ31L474K	.12	1.34	.82	DQ31M474K	.12	1.77	1.20	DQ31R474K
.56	.12	1.12	.82	DQ31L564K	.12	1.02	1.20	DQ31M564K	.12	1.58	1.57	DQ31R564K
.68	.12	1.22	.82	DQ31L684K	.12	1.13	1.20	DQ31M684K	.12	1.72	1.57	DQ31R684K
.82	.12	1.32	.82	DQ31L824K	.12	1.22	1.20	DQ31M824K	.12	1.88	1.57	DQ31R824K
1.0	.12	1.20	1.07	DQ31L105K	.12	1.34	1.20	DQ31M105K	.12	2.06	1.57	DQ31R105K
1.5	.12	1.43	1.07	DQ31L155K	.12	1.60	1.20	DQ31M155K	.12	1.95	2.32	DQ31R155K
2.0	.12	1.62	1.07	DQ31L205K	.12	1.82	1.20	DQ31M205K	.12	2.22	2.32	DQ31R205K
Paper Tube Core .250" I.D. x .315" O.D. CORE CODE 2												
.10	.25	.77	.57	DQ32L104K	.25	.72	.82	DQ32M104K	.25	1.28	.82	DQ32R104K
.12	.25	.83	.57	DQ32L124K	.25	.77	.82	DQ32M124K	.25	1.38	.82	DQ32R124K
.15	.25	.91	.57	DQ32L154K	.25	.84	.82	DQ32M154K	.25	1.51	.82	DQ32R154K
.18	.25	.98	.57	DQ32L184K	.25	.91	.82	DQ32M184K	.25	1.19	1.20	DQ32R184K
.22	.25	1.07	.57	DQ32L224K	.25	.99	.82	DQ32M224K	.25	1.30	1.20	DQ32R224K
.27	.25	1.17	.57	DQ32L274K	.25	1.08	.82	DQ32M274K	.25	1.41	1.20	DQ32R274K
.33	.25	.92	.82	DQ32L334K	.25	1.18	.82	DQ32M334K	.25	1.54	1.20	DQ32R334K
.47	.25	1.07	.82	DQ32L474K	.25	1.37	.82	DQ32M474K	.25	1.79	1.20	DQ32R474K
.56	.25	1.16	.82	DQ32L564K	.25	1.47	.82	DQ32M564K	.25	1.94	1.20	DQ32R564K
.68	.25	1.25	.82	DQ32L684K	.25	1.17	1.20	DQ32M684K	.25	1.75	1.57	DQ32R684K
.82	.25	1.35	.82	DQ32L824K	.25	1.26	1.20	DQ32M824K	.25	1.90	1.57	DQ32R824K
1.0	.25	1.47	.82	DQ32L105K	.25	1.37	1.20	DQ32M105K	.25	2.08	1.57	DQ32R105K
1.2	.25	1.33	1.07	DQ32L125K	.25	1.47	1.20	DQ32M125K	.25	2.25	1.57	DQ32R125K
1.5	.25	1.45	1.07	DQ32L155K	.25	1.62	1.20	DQ32M155K	.25	2.50	1.57	DQ32R155K
2.0	.25	1.65	1.07	DQ32L205K	.25	1.84	1.20	DQ32M205K	.25	2.24	2.32	DQ32R205K
3.0	.25	1.73	1.32	DQ32L305K	.25	1.83	1.57	DQ32M305K	.25	2.70	2.32	DQ32R305K
Phenolic Tube Core .500" I.D. x .625" O.D. CORE CODE 5												
.10	.50	1.27	.57	DQ35L104K	.50	1.21	.82	DQ35M104K	.50	1.40	.82	DQ35R104K
.25	.50	1.27	.57	DQ35L254K	.50	1.21	.82	DQ35M254K	.50	1.48	1.20	DQ35R254K
.50	.50	1.25	.82	DQ35L504K	.50	1.51	.82	DQ35M504K	.50	1.93	1.20	DQ35R504K
.75	.50	1.42	.82	DQ35L754K	.50	1.76	.82	DQ35M754K	.50	2.28	1.20	DQ35R754K
1.0	.50	1.57	.82	DQ35L105K	.50	1.48	1.20	DQ35M105K	.50	2.15	1.57	DQ35R105K
1.2	.50	1.68	.82	DQ35L125K	.50	1.58	1.20	DQ35M125K	.50	2.32	1.57	DQ35R125K
1.5	.50	1.56	1.07	DQ35L155K	.50	1.75	1.20	DQ35M155K	.50	2.56	1.57	DQ35R155K
2.0	.50	1.74	1.07	DQ35L205K	.50	1.93	1.20	DQ35M205K	.50	2.31	2.32	DQ35R205K
3.0	.50	2.05	1.07	DQ35L305K	.50	2.28	1.20	DQ35M305K	.50	2.75	2.32	DQ35R305K
4.0	.50	2.04	1.32	DQ35L405K	.50	2.15	1.57	DQ35M405K	.50	3.14	2.32	DQ35R405K

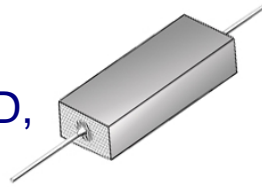
TOLERANCE TABLE

Code	Tolerance
A	= ± 0.1% ♦
B	= ± 0.25% ♦
D	= ± 0.5% ♦
F	= ± 1% ♦
G	= ± 2% ♦
H	= ± 3% ♦
J	= ± 5%
K	= ± 10%
M	= ± 20%
N	= ± 30%
P	= GMV
S	= -10% +30%
T	= -10% +50%
V	= -10% +20%
X	= Special

♦ Temperature Stabilized

Note: Replace the last digit **K** with the desired tolerance code from the tolerance table. For an in-between value use the next larger value's dimensions. Custom sizes are readily available. All dimensions are in inches. All +.05" dimension tolerances are Maximum.

METALLIZED MYLAR HERMETICALLY SEALED, RECTANGULAR METAL CASED, CAPACITORS



DG3
METALLIZED MYLAR
HERMETIC SEAL, RECTANG.
REGULAR SERIES

ORDERING DESCRIPTION

Capacitor, fixed: Metallized Mylar dielectric; extended foil construction; tin-plated copper-clad steel wire axial leads; encased in a hermetically sealed rectangular tin plated brass tube with soldered glass to metal end seals.

APPLICATION NOTES

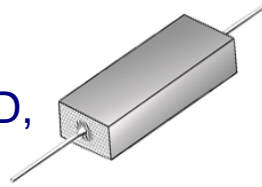
Metal encased capacitors are hermetically sealed and meet the moisture resistance, temperature and immersion cycling requirements of MIL-C-18312.

SELECTION AND ORDERING TABLES Select voltage rating, capacitance and tolerance, read Part Number to the right.

MFD	35VDC 20VAC				50VDC 40VAC				100VDC 70VAC				200VDC 120VAC			
	T	W	L	PART #	T	W	L	PART #	T	W	L	PART #	T	W	L	PART #
RATING	+ .015" - .005"	+ .015" - .005"	± .031"		+ .015" - .005"	+ .015" - .005"	± .031"		+ .015" - .005"	+ .015" - .005"	± .031"		+ .015" - .005"	+ .015" - .005"	± .031"	
.001	.22	.34	.531	DG3S102K	.22	.34	.531	DG3C102K	.22	.34	.563	DG3D102K	.22	.34	.563	DG3E102K
.0015	.22	.34	.531	DG3S152K	.22	.34	.531	DG3C152K	.22	.34	.563	DG3D152K	.22	.34	.563	DG3E152K
.0022	.22	.34	.531	DG3S222K	.22	.34	.531	DG3C222K	.22	.34	.563	DG3D222K	.22	.34	.563	DG3E222K
.0027	.22	.34	.531	DG3S272K	.22	.34	.531	DG3C272K	.22	.34	.563	DG3D272K	.22	.34	.563	DG3E272K
.0033	.22	.34	.531	DG3S332K	.22	.34	.531	DG3C332K	.22	.34	.563	DG3D332K	.22	.34	.563	DG3E332K
.0047	.22	.34	.531	DG3S472K	.22	.34	.531	DG3C472K	.22	.34	.563	DG3D472K	.22	.34	.563	DG3E472K
.0056	.22	.34	.531	DG3S562K	.22	.34	.531	DG3C562K	.22	.34	.563	DG3D562K	.22	.34	.563	DG3E562K
.0068	.22	.34	.531	DG3S682K	.22	.34	.531	DG3C682K	.22	.34	.563	DG3D682K	.22	.34	.563	DG3E682K
.0082	.22	.34	.531	DG3S822K	.22	.34	.531	DG3C822K	.22	.34	.563	DG3D822K	.22	.34	.563	DG3E822K
.01	.22	.34	.531	DG3S103K	.22	.34	.531	DG3C103K	.22	.34	.563	DG3D103K	.22	.34	.688	DG3E103K
.012	.22	.34	.531	DG3S123K	.22	.34	.531	DG3C123K	.22	.34	.563	DG3D123K	.22	.34	.688	DG3E123K
.015	.22	.34	.531	DG3S153K	.22	.34	.531	DG3C153K	.22	.34	.563	DG3D153K	.22	.34	.688	DG3E153K
.018	.22	.34	.531	DG3S183K	.22	.34	.531	DG3C183K	.22	.34	.563	DG3D183K	.22	.34	.688	DG3E183K
.022	.22	.34	.531	DG3S223K	.22	.34	.531	DG3C223K	.22	.34	.563	DG3D223K	.22	.34	.688	DG3E223K
.027	.22	.34	.531	DG3S273K	.22	.34	.531	DG3C273K	.22	.34	.563	DG3D273K	.22	.34	.688	DG3E273K
.033	.22	.34	.531	DG3S333K	.22	.34	.531	DG3C333K	.22	.34	.563	DG3D333K	.22	.34	.688	DG3E333K
.039	.22	.34	.531	DG3S393K	.22	.34	.531	DG3C393K	.22	.34	.563	DG3D393K	.22	.34	.688	DG3E393K
.047	.22	.34	.531	DG3S473K	.22	.34	.531	DG3C473K	.22	.34	.563	DG3D473K	.22	.34	.688	DG3E473K
.056	.22	.34	.531	DG3S563K	.22	.34	.531	DG3C563K	.22	.34	.563	DG3D563K	.22	.34	.688	DG3E563K
.068	.22	.34	.531	DG3S683K	.22	.34	.531	DG3C683K	.22	.34	.563	DG3D683K	.22	.34	.813	DG3E683K
.082	.22	.34	.531	DG3S823K	.22	.34	.531	DG3C823K	.22	.34	.563	DG3D823K	.22	.34	.813	DG3E823K
.10	.22	.34	.531	DG3S104K	.22	.34	.531	DG3C104K	.22	.34	.688	DG3D104K	.22	.34	.813	DG3E104K
.12	.22	.34	.531	DG3S124K	.22	.34	.531	DG3C124K	.22	.34	.688	DG3D124K	.22	.34	.938	DG3E124K
.15	.22	.34	.563	DG3S154K	.22	.34	.625	DG3C154K	.22	.34	.688	DG3D154K	.22	.34	1.125	DG3E154K
.18	.22	.34	.563	DG3S184K	.22	.34	.625	DG3C184K	.22	.34	.688	DG3D184K	.22	.34	1.125	DG3E184K
.22	.22	.34	.563	DG3S224K	.22	.34	.625	DG3C224K	.22	.34	.813	DG3D224K	.31	.41	.938	DG3E224K
.25	.22	.34	.563	DG3S254K	.22	.34	.625	DG3C254K	.22	.34	.813	DG3D254K	.31	.41	.938	DG3E254K
.27	.22	.34	.563	DG3S274K	.22	.34	.625	DG3C274K	.22	.34	.813	DG3D274K	.31	.41	.938	DG3E274K
.33	.22	.34	.563	DG3S334K	.22	.34	.625	DG3C334K	.22	.34	.813	DG3D334K	.31	.41	1.125	DG3E334K
.39	.22	.34	.563	DG3S394K	.22	.34	.625	DG3C394K	.22	.34	.938	DG3D394K	.31	.41	1.125	DG3E394K
.47	.22	.34	.563	DG3S474K	.31	.41	.625	DG3C474K	.22	.34	1.125	DG3D474K	.31	.41	1.313	DG3E474K
.50	.22	.34	.688	DG3S504K	.31	.41	.625	DG3C504K	.22	.34	1.125	DG3D504K	.31	.41	1.313	DG3E504K
.56	.22	.34	.688	DG3S564K	.31	.41	.625	DG3C564K	.22	.34	1.125	DG3D564K	.40	.57	1.125	DG3E564K
.68	.22	.34	.688	DG3S684K	.31	.41	.625	DG3C684K	.31	.41	.938	DG3D684K	.40	.57	1.125	DG3E684K
.75	.22	.34	.688	DG3S754K	.31	.41	.625	DG3C754K	.31	.41	.938	DG3D754K	.40	.57	1.125	DG3E754K
.82	.22	.34	.688	DG3S824K	.31	.41	.781	DG3C824K	.31	.41	.938	DG3D824K	.40	.57	1.313	DG3E824K
1.0	.22	.34	.688	DG3S105K	.31	.41	.781	DG3C105K	.31	.41	1.125	DG3D105K	.40	.57	1.563	DG3E105K
1.2	.22	.34	.688	DG3S125K	.31	.41	.906	DG3C125K	.31	.41	1.313	DG3D125K	.40	.57	1.813	DG3E125K
1.5	.31	.41	.688	DG3S155K	.31	.41	.906	DG3C155K	.31	.41	1.313	DG3D155K	.40	.57	1.813	DG3E155K
1.8	.31	.41	.688	DG3S185K	.40	.57	1.063	DG3C185K	.40	.57	1.125	DG3D185K	.50	.65	1.563	DG3E185K
2.0	.31	.41	.688	DG3S205K	.40	.57	1.063	DG3C205K	.40	.57	1.125	DG3D205K	.50	.65	1.563	DG3E205K
3.0	.31	.41	.813	DG3S305K	.40	.57	1.063	DG3C305K	.40	.57	1.313	DG3D305K	.50	.65	2.313	DG3E305K
4.0	.31	.41	.938	DG3S405K	.50	.65	1.313	DG3C405K	.50	.65	1.813	DG3D405K	.60	.80	2.313	DG3E405K
5.0	.40	.57	.938	DG3S505K	.50	.65	1.313	DG3C505K	.50	.65	1.813	DG3D505K	.60	.80	2.313	DG3E505K
6.0	.40	.57	.938	DG3S605K	.50	.65	1.313	DG3C605K	.50	.65	2.062	DG3D605K	.60	.80	2.313	DG3E605K
8.0	.40	.57	1.125	DG3S805K	.50	.65	1.313	DG3C805K	.50	.65	2.062	DG3D805K	.60	.80	2.313	DG3E805K
10.0	.40	.57	1.125	DG3S106K	.60	.80	1.313	DG3C106K	.60	.80	2.062	DG3D106K	.60	.80	2.313	DG3E106K
12.0	.40	.57	1.313	DG3S126K	.60	.80	1.313	DG3C126K	.60	.80	2.062	DG3D126K	.60	.80	2.313	DG3E126K
15.0	.40	.57	1.313	DG3S156K	.60	.80	1.781	DG3C156K	.60	.80	2.313	DG3D156K	.60	.80	2.313	DG3E156K
18.0	.50	.65	1.313	DG3S186K												
20.0	.50	.65	1.313	DG3S206K												
30.0	.60	.80	1.313	DG3S306K												

Note: Replace the last digit **K** with the desired tolerance code from the tolerance table. For an in-between value use the next larger value's dimensions. Custom sizes are readily available. All dimensions are in inches.

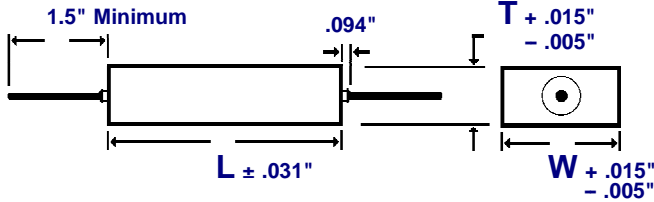
METALLIZED MYLAR HERMETICALLY SEALED, RECTANGULAR METAL CASED, CAPACITORS



DG3
METALLIZED MYLAR
HERMETIC SEAL, RECTANG.
REGULAR SERIES

DIMENSIONS See tables for specific T, W, L values.

WIRE SIZE (Length 1.5" Minimum)



BODY SIZE (T) x (W)	WIRE SIZE	
	AWG No.	Diameter
.22" x .34"	24	0.020"
.31" x .41"	22	0.025"
.40" x .57" & Larger	20	0.032"

SELECTION AND ORDERING TABLES Select voltage rating, capacitance and tolerance, read Part Number to the right.

MFD	400VDC 160VAC				600VDC 230VAC				1000VDC 360VAC				
	RATING	T	W	L	PART #	T	W	L	PART #	T	W	L	PART #
	+ .015" - .005"	+ .015" - .005"	± .031"		+ .015" - .005"	+ .015" - .005"	± .031"		+ .015" - .005"	+ .015" - .005"	± .031"		
.001	.22	.34	.563	DG3G102K	.22	.34	.563	DG3J102K	.22	.34	1.125	DG3M102K	
.0012	.22	.34	.563	DG3G122K	.22	.34	.563	DG3J122K	.22	.34	1.125	DG3M122K	
.0015	.22	.34	.563	DG3G152K	.22	.34	.563	DG3J152K	.22	.34	1.125	DG3M152K	
.0018	.22	.34	.563	DG3G182K	.22	.34	.563	DG3J182K	.22	.34	1.125	DG3M182K	
.0022	.22	.34	.563	DG3G222K	.22	.34	.563	DG3J222K	.22	.34	1.125	DG3M222K	
.0027	.22	.34	.563	DG3G272K	.22	.34	.563	DG3J272K	.22	.34	1.125	DG3M272K	
.0033	.22	.34	.563	DG3G332K	.22	.34	.563	DG3J332K	.22	.34	1.125	DG3M332K	
.0039	.22	.34	.563	DG3G392K	.22	.34	.563	DG3J392K	.22	.34	1.125	DG3M392K	
.0047	.22	.34	.563	DG3G472K	.22	.34	.563	DG3J472K	.22	.34	1.125	DG3M472K	
.0056	.22	.34	.563	DG3G562K	.22	.34	.563	DG3J562K	.22	.34	1.125	DG3M562K	
.0068	.22	.34	.563	DG3G682K	.22	.34	.563	DG3J682K	.22	.34	1.125	DG3M682K	
.0082	.22	.34	.563	DG3G822K	.22	.34	.563	DG3J822K	.22	.34	1.125	DG3M822K	
.01	.22	.34	.688	DG3G103K	.22	.34	.688	DG3J103K	.22	.34	1.125	DG3M103K	
.012	.22	.34	.688	DG3G123K	.22	.34	.688	DG3J123K	.31	.41	1.125	DG3M123K	
.015	.22	.34	.688	DG3G153K	.22	.34	.688	DG3J153K	.31	.41	1.125	DG3M153K	
.018	.22	.34	.688	DG3G183K	.22	.34	.688	DG3J183K	.31	.41	1.125	DG3M183K	
.022	.22	.34	.688	DG3G223K	.22	.34	.813	DG3J223K	.31	.41	1.125	DG3M223K	
.027	.22	.34	.688	DG3G273K	.22	.34	.813	DG3J273K	.40	.57	1.125	DG3M273K	
.033	.22	.34	.688	DG3G333K	.22	.34	.938	DG3J333K	.40	.57	1.125	DG3M333K	
.039	.22	.34	.813	DG3G393K	.22	.34	1.125	DG3J393K	.40	.57	1.125	DG3M393K	
.047	.22	.34	.813	DG3G473K	.22	.34	1.125	DG3J473K	.40	.57	1.125	DG3M473K	
.056	.22	.34	.813	DG3G563K	.31	.41	.938	DG3J563K	.50	.65	1.125	DG3M563K	
.068	.22	.34	.938	DG3G683K	.31	.41	.938	DG3J683K	.50	.65	1.125	DG3M683K	
.082	.22	.34	1.125	DG3G823K	.31	.41	1.125	DG3J823K	.50	.65	1.500	DG3M823K	
.10	.22	.34	1.125	DG3G104K	.31	.41	1.125	DG3J104K	.50	.65	1.500	DG3M104K	
.12	.31	.41	.938	DG3G124K	.31	.41	1.313	DG3J124K	.50	.65	1.500	DG3M124K	
.15	.31	.41	.938	DG3G154K	.40	.57	1.125	DG3J154K	.50	.65	1.500	DG3M154K	
.18	.31	.41	1.125	DG3G184K	.40	.57	1.125	DG3J184K	.60	.80	1.500	DG3M184K	
.22	.31	.41	1.313	DG3G224K	.40	.57	1.313	DG3J224K	.60	.80	1.500	DG3M224K	
.25	.31	.41	1.313	DG3G254K	.40	.57	1.313	DG3J254K	.60	.80	1.813	DG3M254K	
.27	.31	.41	1.313	DG3G274K	.40	.57	1.313	DG3J274K	.60	.80	1.813	DG3M274K	
.33	.40	.57	1.125	DG3G334K	.40	.57	1.562	DG3J334K	.60	.80	1.813	DG3M334K	
.39	.40	.57	1.125	DG3G394K	.40	.57	1.813	DG3J394K	.60	.80	2.625	DG3M394K	
.47	.40	.57	1.313	DG3G474K	.50	.65	1.562	DG3J474K	.60	.80	2.625	DG3M474K	
.50	.40	.57	1.313	DG3G504K	.50	.65	1.562	DG3J504K	.60	.80	2.625	DG3M504K	
.56	.40	.57	1.313	DG3G564K	.50	.65	1.813	DG3J564K	.60	.80	2.625	DG3M564K	
.68	.40	.57	1.563	DG3G684K	.50	.65	2.062	DG3J684K	.60	.80	3.375	DG3M684K	
.75	.40	.57	1.813	DG3G754K	.50	.65	2.062	DG3J754K	.60	.80	3.375	DG3M754K	
.82	.40	.57	1.813	DG3G824K	.50	.65	2.313	DG3J824K	.60	.80	3.375	DG3M824K	
1.0	.50	.65	1.563	DG3G105K	.60	.80	2.062	DG3J105K					
1.2	.50	.65	2.063	DG3G125K									
1.5	.50	.65	2.063	DG3G155K									
1.8	.60	.80	1.813	DG3G185K									
2.0	.60	.80	1.813	DG3G205K									

TOLERANCE TABLE

Code Tolerance

A	= ± 0.1% ♦
B	= ± 0.25% ♦
D	= ± 0.5% ♦
F	= ± 1% ♦
G	= ± 2% ♦
H	= ± 3% ♦
J	= ± 5%
K	= ± 10%
M	= ± 20%
N	= ± 30%
P	= GMV
S	= -10% +30%
T	= -10% +50%
V	= -10% +20%
X	= Special

♦ Temperature Stabilized

HARDWARE

For use with metal tubes. Add the Code number to the end of the Part Number, include the dash ("-").

CODE DESCRIPTION

- 1 = Tangential Bracket
- 2 = Threaded Neck Term.
- 3 = Flat Lug Terminal
- 4 = 90° Lug Terminal
- 5 = Insulating Sleeve
- 6 = Stud Mounting

Add .015" to the capacitors dimensions for the Insulating Sleeve.

Codes may be combined. Example:
- 35 = Flat Lug Terminal with Insulating Sleeve. (Place lower number first)

Note: Replace the last digit **K** with the desired tolerance code from the tolerance table. For an in-between value use the next larger value's dimensions. Custom sizes are readily available. All dimensions are in inches.

METALLIZED MYLAR HERMETICALLY SEALED, ROUND METAL CASED CAPACITORS



DL3
METALLIZED MYLAR
HERMETIC SEAL, ROUND
REGULAR SERIES

ORDERING DESCRIPTION

Capacitor, fixed: Metallized Mylar dielectric; extended foil construction; tin-plated copper-clad steel wire axial leads; encased in a hermetically sealed round tin plated brass tube with soldered glass to metal end seals.

APPLICATION NOTES

Metal encased capacitors are hermetically sealed and meet the moisture resistance, temperature and immersion cycling requirements of MIL-C-18312.

SELECTION AND ORDERING TABLES Select voltage rating, capacitance and tolerance, read Part Number to the right.

MFD	35VDC 20VAC			50VDC 40VAC			100VDC 70VAC			200VDC 120VAC		
	RATING	D	L	PART #	D	L	PART #	D	L	PART #	D	L
	+ .015" - .005"	± .031"		+ .015" - .005"	± .031"		+ .015" - .005"	± .031"		+ .015" - .005"	± .031"	
.001	.195	.531	DL3S102K	.235	.531	DL3C102K	.235	.531	DL3D102K	.235	.531	DL3E102K
.0027	.195	.531	DL3S272K	.235	.531	DL3C272K	.235	.531	DL3D272K	.235	.531	DL3E272K
.0033	.195	.531	DL3S332K	.235	.531	DL3C332K	.235	.531	DL3D332K	.235	.531	DL3E332K
.0056	.195	.531	DL3S562K	.235	.531	DL3C562K	.235	.531	DL3D562K	.235	.531	DL3E562K
.0068	.195	.531	DL3S682K	.235	.531	DL3C682K	.235	.531	DL3D682K	.235	.531	DL3E682K
.0082	.195	.531	DL3S822K	.235	.531	DL3C822K	.235	.531	DL3D822K	.235	.531	DL3E822K
.01	.195	.531	DL3S103K	.235	.531	DL3C103K	.175	.625	DL3D103K	.175	.625	DL3E103K
.012	.195	.531	DL3S123K	.235	.531	DL3C123K	.175	.625	DL3D123K	.175	.625	DL3E123K
.015	.195	.531	DL3S153K	.235	.531	DL3C153K	.175	.625	DL3D153K	.175	.625	DL3E153K
.018	.195	.531	DL3S183K	.235	.531	DL3C183K	.175	.625	DL3D183K	.175	.625	DL3E183K
.022	.195	.531	DL3S223K	.235	.531	DL3C223K	.175	.625	DL3D223K	.195	.625	DL3E223K
.027	.195	.531	DL3S273K	.235	.531	DL3C273K	.175	.625	DL3D273K	.235	.625	DL3E273K
.033	.195	.531	DL3S333K	.235	.531	DL3C333K	.175	.625	DL3D333K	.235	.625	DL3E333K
.039	.195	.531	DL3S393K	.235	.531	DL3C393K	.175	.625	DL3D393K	.235	.625	DL3E393K
.047	.195	.531	DL3S473K	.235	.531	DL3C473K	.175	.625	DL3D473K	.235	.625	DL3E473K
.056	.195	.531	DL3S563K	.235	.531	DL3C563K	.195	.625	DL3D563K	.235	.813	DL3E563K
.068	.195	.531	DL3S683K	.235	.531	DL3C683K	.195	.625	DL3D683K	.235	.813	DL3E683K
.082	.195	.531	DL3S823K	.235	.531	DL3C823K	.235	.625	DL3D823K	.312	.813	DL3E823K
.10	.195	.531	DL3S104K	.235	.531	DL3C104K	.235	.625	DL3D104K	.312	.813	DL3E104K
.12	.195	.531	DL3S124K	.235	.531	DL3C124K	.235	.625	DL3D124K	.312	.813	DL3E124K
.15	.235	.531	DL3S154K	.235	.625	DL3C154K	.235	.813	DL3D154K	.312	.938	DL3E154K
.18	.235	.531	DL3S184K	.235	.625	DL3C184K	.235	.813	DL3D184K	.312	.938	DL3E184K
.22	.235	.531	DL3S224K	.235	.625	DL3C224K	.312	.813	DL3D224K	.312	1.125	DL3E224K
.25	.235	.531	DL3S254K	.235	.625	DL3C254K	.312	.813	DL3D254K	.312	1.125	DL3E254K
.27	.312	.531	DL3S274K	.235	.625	DL3C274K	.312	.813	DL3D274K	.312	1.125	DL3E274K
.33	.312	.531	DL3S334K	.312	.625	DL3C334K	.312	.813	DL3D334K	.400	.938	DL3E334K
.39	.312	.531	DL3S394K	.312	.625	DL3C394K	.312	.813	DL3D394K	.400	1.125	DL3E394K
.47	.312	.531	DL3S474K	.312	.625	DL3C474K	.312	.938	DL3D474K	.400	1.125	DL3E474K
.50	.312	.625	DL3S504K	.312	.625	DL3C504K	.312	.938	DL3D504K	.400	1.125	DL3E504K
.56	.312	.625	DL3S564K	.312	.625	DL3C564K	.312	1.125	DL3D564K	.400	1.313	DL3E564K
.68	.312	.625	DL3S684K	.312	.781	DL3C684K	.312	1.125	DL3D684K	.500	1.125	DL3E684K
.75	.312	.625	DL3S754K	.312	.781	DL3C754K	.400	.938	DL3D754K	.500	1.125	DL3E754K
.82	.312	.625	DL3S824K	.312	.781	DL3C824K	.400	.938	DL3D824K	.500	1.313	DL3E824K
1.0	.312	.625	DL3S105K	.400	.781	DL3C105K	.400	1.125	DL3D105K	.500	1.313	DL3E105K
1.2	.312	.625	DL3S125K	.400	.781	DL3C125K	.500	1.125	DL3D125K	.562	1.813	DL3E125K
1.5	.400	.625	DL3S155K	.400	.781	DL3C155K	.500	1.125	DL3D155K	.562	1.813	DL3E155K
1.8	.400	.625	DL3S185K	.400	.906	DL3C185K	.500	1.125	DL3D185K	.562	1.813	DL3E185K
2.0	.400	.625	DL3S205K	.400	.906	DL3C205K	.500	1.125	DL3D205K	.562	1.813	DL3E205K
3.0	.400	.813	DL3S305K	.500	.906	DL3C305K	.500	1.313	DL3D305K	.670	1.813	DL3E305K
4.0	.400	.938	DL3S405K	.562	1.063	DL3C405K	.562	1.563	DL3D405K	.750	2.313	DL3E405K
5.0	.400	.938	DL3S505K	.562	1.063	DL3C505K	.562	1.563	DL3D505K	.750	2.313	DL3E505K
6.0	.500	.938	DL3S605K	.562	1.313	DL3C605K	.670	1.813	DL3D605K	1.000	2.062	DL3E605K
8.0	.500	1.125	DL3S805K	.562	1.313	DL3C805K	.670	1.813	DL3D805K	1.000	2.062	DL3E805K
10.0	.500	1.125	DL3S106K	.670	1.313	DL3C106K	.750	1.813	DL3D106K	1.000	2.563	DL3E106K
12.0	.500	1.313	DL3S126K	.670	1.313	DL3C126K	.750	2.062	DL3D126K			
15.0	.562	1.313	DL3S156K	.750	1.313	DL3C156K	.750	2.313	DL3D156K			
20.0	.562	1.313	DL3S206K	.750	1.813	DL3C206K	1.000	2.313	DL3D206K			
30.0	.670	1.313	DL3S306K	1.000	1.813	DL3C306K						
40.0	.750	1.313	DL3S406K	1.000	1.813	DL3C406K						
50.0	1.000	1.563	DL3S506K									
75.0	1.000	1.813	DL3S756K									
100.0	1.000	2.313	DL3S107K									

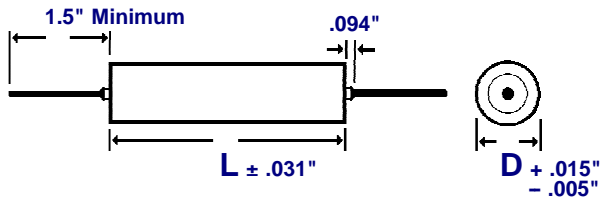
Note: Replace the last digit **K** with the desired tolerance code from the tolerance table. For an in-between value use the next larger value's dimensions. Custom sizes are readily available. All dimensions are in inches.

METALLIZED MYLAR HERMETICALLY SEALED, ROUND METAL CASED CAPACITORS



DL3
METALLIZED MYLAR
HERMETIC SEAL, ROUND
REGULAR SERIES

DIMENSIONS See tables for specific D, L values.



WIRE SIZE (Length 1.5" Minimum)

BODY DIAMETER (D)	WIRE SIZE	
	AWG No.	Diameter
.175" & .195"	24	0.020"
.235" & .312"	22	0.025"
.400" & Larger	20	0.032"

SELECTION AND ORDERING TABLES Select voltage rating, capacitance and tolerance, read Part Number to the right.

MFD	400VDC 160VAC			600VDC 230VAC			1000VDC 360VAC			
	RATING	D	L	PART #	D	L	PART #	D	L	PART #
		+ .015" - .005"	± .031"		+ .015" - .005"	± .031"		+ .015" - .005"	± .031"	
.001	.235	.531	DL3G102K	.235	.531	DL3J102K	.312	1.125	DL3M102K	
.0012	.235	.531	DL3G122K	.235	.531	DL3J122K	.312	1.125	DL3M122K	
.0015	.235	.531	DL3G152K	.235	.531	DL3J152K	.312	1.125	DL3M152K	
.0018	.235	.531	DL3G182K	.235	.531	DL3J182K	.312	1.125	DL3M182K	
.0022	.235	.531	DL3G222K	.235	.531	DL3J222K	.312	1.125	DL3M222K	
.0027	.235	.531	DL3G272K	.235	.531	DL3J272K	.312	1.125	DL3M272K	
.0033	.235	.531	DL3G332K	.235	.531	DL3J332K	.312	1.125	DL3M332K	
.0039	.235	.531	DL3G392K	.235	.531	DL3J392K	.312	1.125	DL3M392K	
.0047	.235	.531	DL3G472K	.235	.531	DL3J472K	.312	1.125	DL3M472K	
.0056	.235	.531	DL3G562K	.235	.531	DL3J562K	.312	1.125	DL3M562K	
.0068	.235	.531	DL3G682K	.235	.531	DL3J682K	.312	1.125	DL3M682K	
.0082	.235	.531	DL3G822K	.235	.531	DL3J822K	.312	1.125	DL3M822K	
.01	.235	.625	DL3G103K	.235	.813	DL3J103K	.312	1.125	DL3M103K	
.012	.235	.625	DL3G123K	.235	.813	DL3J123K	.312	1.125	DL3M123K	
.015	.235	.625	DL3G153K	.235	.813	DL3J153K	.400	1.125	DL3M153K	
.018	.235	.625	DL3G183K	.312	.813	DL3J183K	.400	1.125	DL3M183K	
.022	.235	.625	DL3G223K	.312	.813	DL3J223K	.400	1.125	DL3M223K	
.027	.235	.813	DL3G273K	.312	.813	DL3J273K	.400	1.125	DL3M273K	
.033	.235	.813	DL3G333K	.312	.813	DL3J333K	.500	1.125	DL3M333K	
.039	.312	.813	DL3G393K	.312	.938	DL3J393K	.500	1.125	DL3M393K	
.047	.312	.813	DL3G473K	.312	.938	DL3J473K	.500	1.125	DL3M473K	
.056	.312	.813	DL3G563K	.312	1.125	DL3J563K	.562	1.125	DL3M563K	
.068	.312	.813	DL3G683K	.312	1.125	DL3J683K	.562	1.125	DL3M683K	
.082	.312	.938	DL3G823K	.400	.938	DL3J823K	.562	1.500	DL3M823K	
.10	.312	.938	DL3G104K	.400	1.125	DL3J104K	.562	1.500	DL3M104K	
.12	.312	1.125	DL3G124K	.400	1.125	DL3J124K	.562	1.500	DL3M124K	
.15	.400	.938	DL3G154K	.500	1.125	DL3J154K	.670	1.500	DL3M154K	
.18	.400	.938	DL3G184K	.500	1.125	DL3J184K	.670	1.500	DL3M184K	
.22	.400	1.125	DL3G224K	.500	1.125	DL3J224K	.750	1.500	DL3M224K	
.25	.400	1.313	DL3G254K	.562	1.313	DL3J254K	.750	1.500	DL3M254K	
.27	.400	1.313	DL3G274K	.562	1.313	DL3J274K	.750	1.500	DL3M274K	
.33	.400	1.313	DL3G334K	.562	1.313	DL3J334K	.750	1.875	DL3M334K	
.39	.500	1.125	DL3G394K	.562	1.813	DL3J394K	.750	1.875	DL3M394K	
.47	.500	1.313	DL3G474K	.562	1.813	DL3J474K	1.000	1.875	DL3M474K	
.50	.500	1.313	DL3G504K	.562	1.813	DL3J504K	1.000	1.875	DL3M504K	
.56	.500	1.313	DL3G564K	.562	1.813	DL3J564K	1.000	1.875	DL3M564K	
.68	.562	1.313	DL3G684K	.670	1.813	DL3J684K	1.000	1.875	DL3M684K	
.75	.562	1.313	DL3G754K	.670	1.813	DL3J754K	1.000	1.875	DL3M754K	
.82	.562	1.813	DL3G824K	.670	1.813	DL3J824K	1.000	2.625	DL3M824K	
1.0	.562	1.813	DL3G105K	.750	1.813	DL3J105K	1.000	2.625	DL3M105K	
1.2	.670	1.813	DL3G125K	1.000	1.813	DL3J125K	1.000	2.625	DL3M125K	
1.5	.670	1.813	DL3G155K	1.000	1.813	DL3J155K				
1.8	.750	1.813	DL3G185K	1.000	2.063	DL3J185K				
2.0	.750	1.813	DL3G205K	1.000	2.063	DL3J205K				
3.0	1.000	1.813	DL3G305K							
4.0	1.000	2.313	DL3G405K							
5.0	1.000	2.313	DL3G505K							

TOLERANCE TABLE

Code Tolerance

A	= ± 0.1% ♦
B	= ± 0.25% ♦
D	= ± 0.5% ♦
F	= ± 1% ♦
G	= ± 2% ♦
H	= ± 3% ♦
J	= ± 5%
K	= ± 10%
M	= ± 20%
N	= ± 30%
P	= GMV
S	= -10% +30%
T	= -10% +50%
V	= -10% +20%
X	= Special

♦ Temperature Stabilized

HARDWARE

For use with metal tubes. Add the Code number to the end of the Part Number, include the dash ("-").

CODE DESCRIPTION

- 1	= Tangential Bracket
- 2	= Threaded Neck Term.
- 3	= Flat Lug Terminal
- 4	= 90° Lug Terminal
- 5	= Insulating Sleeve
- 6	= Stud Mounting

Add .015" to the capacitors dimensions for the Insulating Sleeve.

Codes may be combined. Example:
- 35 = Flat Lug Terminal with Insulating Sleeve.
(Place lower number first)

Note: Replace the last digit **K** with the desired tolerance code from the tolerance table. For an in-between value use the next larger value's dimensions. Custom sizes are readily available. All dimensions are in inches.

METALLIZED MYLAR CAPACITORS PARAMETRIC TREND CURVES AND ACCEPTANCE CRITERIA

SERIES **D**

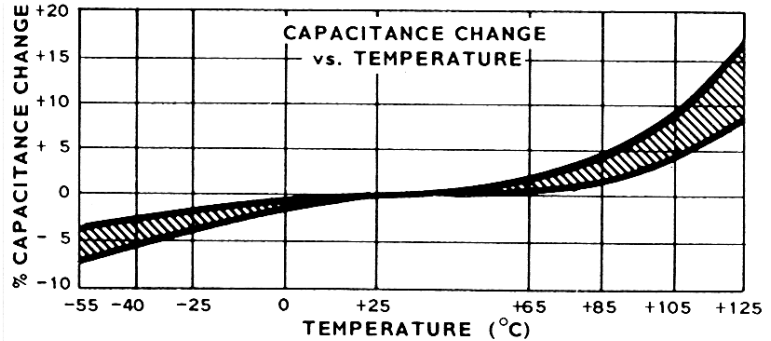
CAPACITANCE

Reference MIL-STD-202, Method 305
Test Frequency: 1000 Hz
Temperature: +25°C

Capacitance Change Over
Temperature.

Acceptance Limits:

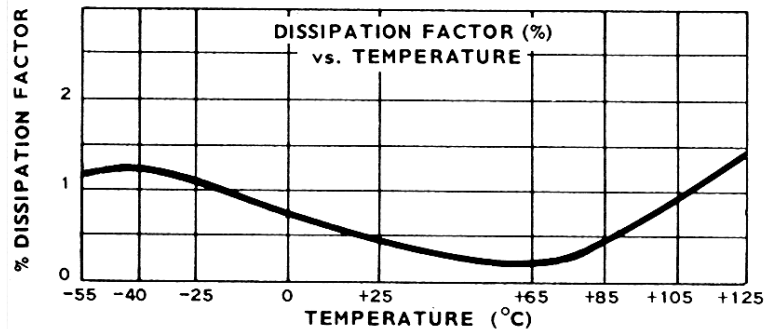
- @ -55°C = -7% Maximum Change
- @ +85°C = +5% Maximum Change
- @ +125°C = ±16% Maximum Change



DISSIPATION FACTOR

Reference MIL-STD-202,
Method 306
Test Frequency: 1000 Hz
Temperature: +25°C

Acceptance Limit: 0.65% Maximum

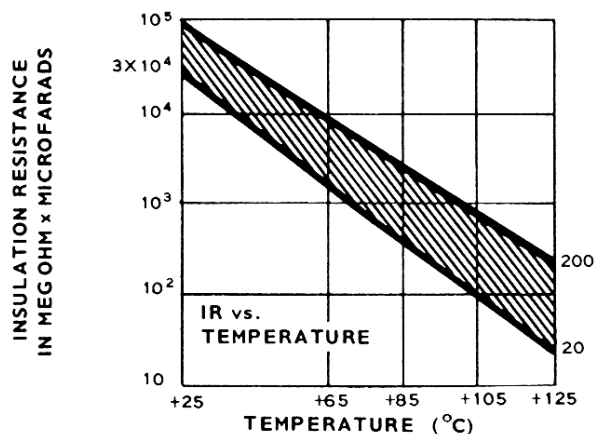


INSULATION RESISTANCE

Reference MIL-STD-202, Method 302
Electrification shall be at rated voltage
or 500 VDC, whichever is less and for
a time not greater than 2 minutes.

Acceptance Limits:

Test Temperature	Megs x μ f Minimum	Megohms Need not exceed
@ +25°C	10,000	30,000
@ +85°C	100	1,000
@ +125°C	10	100



VOLTAGE RATING

100% of listed voltage rating from -55°C to +85°C,
derate linearly to 50% of the listed voltage rating at +125°C.

VOLTAGE TEST

Reference MIL-STD-202, Method 301. Surge current is limited to 1 ampere maximum. Voltage applied for 1 minute (maximum) @ +25°C. Ground test is performed terminal to case (where the case is not a terminal) at 200% of the DC voltage rating. Dielectric strength test is performed terminal to terminal at 150% of the DC voltage rating.